



PROTEUS ATLAS



ELATION®

500W LILI (Laser Illuminated Lighting Instrument) light engine FX Fixture

DATA SHEET



KEY FEATURES

- 500W LILI (Laser Illuminated Lighting Instrument)
- IP66 housing
- Ultra Long Throw Beam FX
- Continuous 360 Pan Movement
- CMY Color Mixing
- FX Package with rotating, fixed gobos, prisms and dual frost
- Sky Motion Standalone System
- Protective Foam In Lay for transport

Command the heavens with Elation's **PROTEUS ATLAS**, built to deliver otherworldly light for large-scale productions and permanent outdoor installations. With 1 million LUX at 20 meters, LILI technology, and a massive 320mm lens, Atlas cuts through the sky with bold, focused beams that evoke the power of traditional Xenon fixtures.

Its onboard effects system sculpts light with gobos, frosts, and prisms—shifting seamlessly from piercing beams to layered textures and soft washes. With CMY color mixing and a 25-position color wheel, Atlas offers a rich palette for bold bursts, atmospheric moods, and everything in between.

The Atlas' precision motors provide smooth pan, tilt, and continuous rotation, while Elation's SkyMotion system enables synchronized patterns across fixtures without a console. Built and certified with an IP-66 rating, Atlas stands strong in any weather, making it ideal for concerts, cruise ships, and permanent outdoor installs.

Designed for those who think on a larger scale, PROTEUS ATLAS delivers power, precision, and creative freedom, letting audiences look up and experience the extraordinary.



CLASS 1 RISK GROUP 3 PRODUCT PER IEC 62471 - OPERATORS SHALL CONTROL ACCESS TO THE BEAM WITHIN THE HAZARD DISTANCE OR INSTALL THE PRODUCT AT A DISTANCE THAT WILL PREVENT EXPOSURE OF THE SPECTATORS' EYES WITHIN THE HAZARD DISTANCE OF 730 FEET/222 METERS.

ELATION®

Specifications are subject to change without notice ©Elation Professional 05/06/2025
Elation Professional USA | 6122 S. Eastern Ave. | Los Angeles, CA. 90040
323-582-3322 | 323-832-9142 fax | www.elationlighting.com | info@elationlighting.com

Elation Professional B.V. | Junostraat 2 | 6468 EW Kerkrade, The Netherlands
+31 45 546 85 66 | +31 45 546 85 96 fax | www.elationlighting.eu | info@elationlighting.eu



PROTEUS ATLAS



ELATION®

500W LILI (Laser Illuminated Lighting Instrument) light engine FX Fixture

SPECIFICATIONS

SOURCE

500W LILI (Laser Illuminated Lighting Instrument) Light Engine
9000K, CRI 70
12,000 Hour Lamp Life

PHOTOMETRIC DATA

1,000,000 Lux @ 20m
100,000 Lux @ 100m
Beam Angle 0.6° - 8.5°

EFFECTS

Dual Frost (Hot- Spot Beam, Wash FX)
Ultra- Fast Zoom
Focus
2x3 Prisms on Dual Planes
Digital Shutter and Strobe
Pan Angle 360° / 540°
Tilt Angle 250°

COLOR

Full CMY Color Mixing System
25 Position Color Wheel

GOBOS

2 Gobo Wheels
13 Interchangeable-Rotating / Indexing Metal Gobos
26 Static-Stamped Metal Gobos

CONTROL / CONNECTIONS

2 DMX Channel Modes (30/41 Ch)
(4) Button Touch Panel
Full Color 180° Reversible LCD Menu Display
DMX, RDM, Art-Net and sACN Protocol Support
NFC Support
Ip65 5pin DMX In/Out
IP65 RJ45 Ethernet In/Out
IP65 Locking Power In

SIZE / WEIGHT (approx.)

Length: 14.6" (370mm)
Width: 20" (508mm)
Height: 31.5" (800mm)
Weight: 120.8 lbs. (54.8kg)

ELECTRICAL / THERMAL

AC 100-240V 50/60Hz
700W Max Power Consumption
-4°F to 113°F (-20°C to 45°C)

APPROVALS / RATINGS

CE | cETLus | UKCA | FCC | IP66 | FDA



RISK GROUP 3 - Operators shall control access to the beam within the hazard distance of the fixture.



CLASS 1 LASER PRODUCT

This product is in conformity with performance standards for laser products under 21 CFR 1040, except with respect to those characteristics authorized by Variance Number FDA-2024-V-4967 effective on December 19, 2024.



Specifications are subject to change without notice ©Elation Professional 05/06/2025
Elation Professional USA | 6122 S. Eastern Ave. | Los Angeles, CA. 90040
323-582-3322 | 323-832-9142 fax | www.elationlighting.com | info@elationlighting.com

Elation Professional B.V. | Junostraat 2 | 6468 EW Kerkrade, The Netherlands
+31 45 546 85 66 | +31 45 546 85 96 fax | www.elationlighting.eu | info@elationlighting.eu



PROTEUS ATLAS

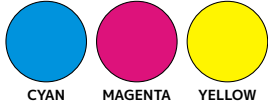


ELATION®

500W LILI (Laser Illuminated Lighting Instrument) light engine FX Fixture

GOBOS | COLORS | ANIMATION WHEEL

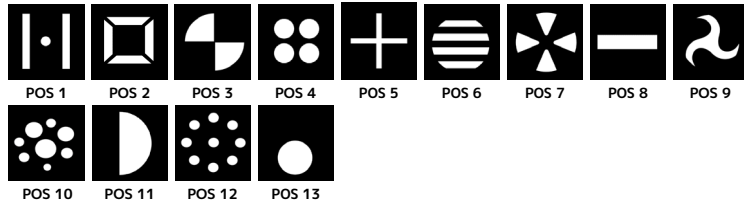
COLOR FLAGS



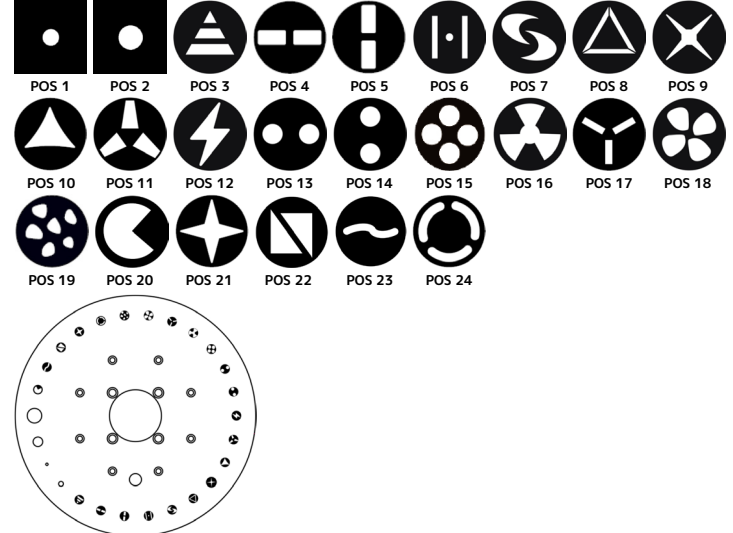
COLOR WHEEL



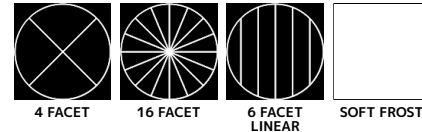
INTERCHANGEABLE ROTATING GOBO WHEEL



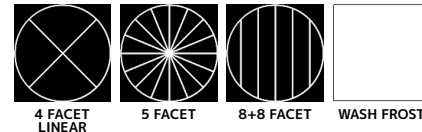
FIXED GOBO WHEEL



FX WHEEL 1



FX WHEEL 2



ORDERING INFORMATION

PRA501	PENDING	PROTEUS ATLAS
TRIGGER CLAMP	1741000032	Heavy Duty Wrap Around Hook Style Clamp
TOU027	PENDING	Tour Link 5pin, 10Ft., Tour Grade, DMX Data Cable*
		*Additional cable lengths available



ELATION®

Specifications are subject to change without notice ©Elation Professional 05/06/2025

Elation Professional USA | 6122 S. Eastern Ave. | Los Angeles, CA. 90040
323-582-3322 | 323-832-9142 fax | www.elationlighting.com | info@elationlighting.com

Elation Professional B.V. | Junostraat 2 | 6468 EW Kerkrade, The Netherlands
+31 45 546 85 66 | +31 45 546 85 96 fax | www.elationlighting.eu | info@elationlighting.eu



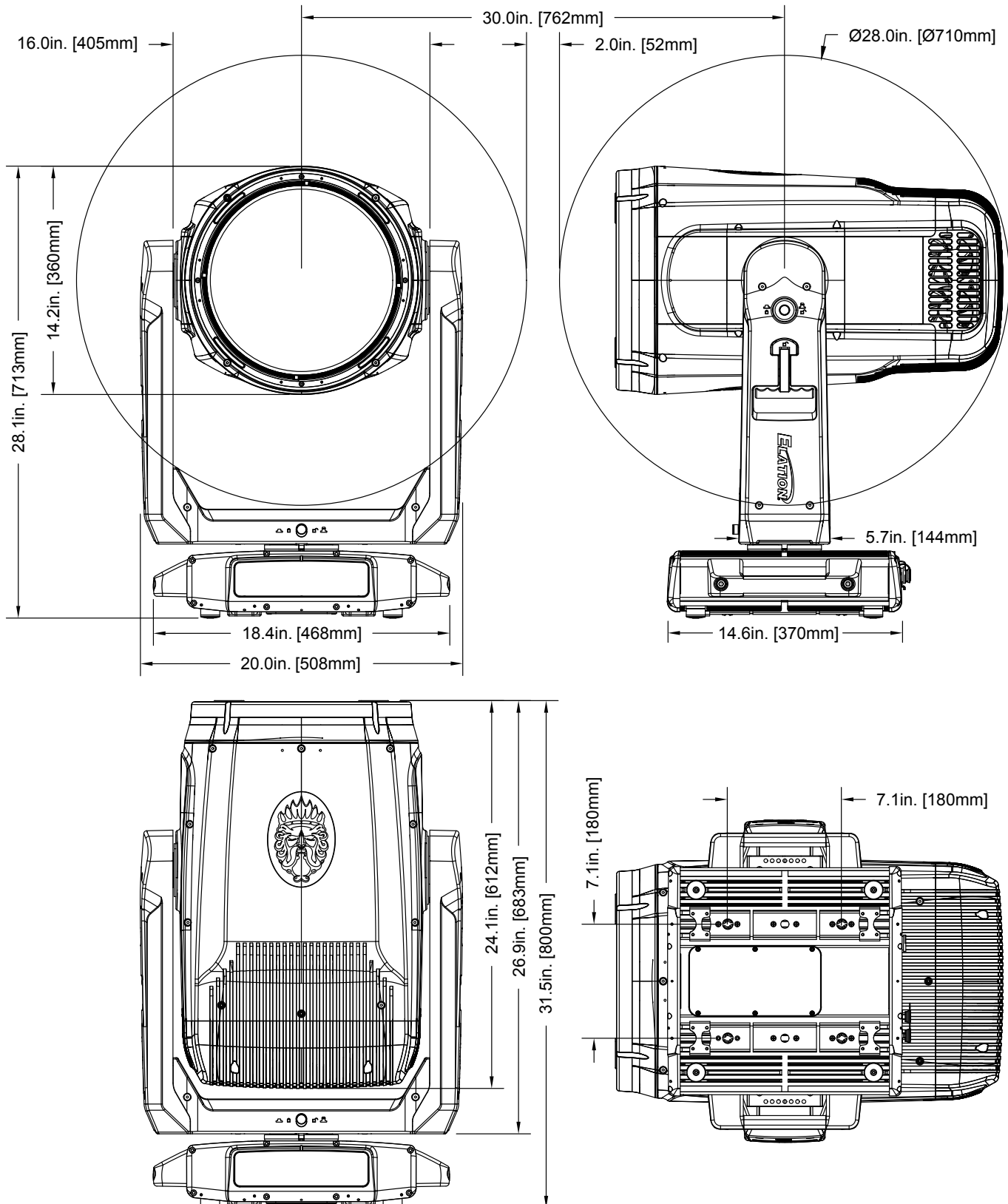
PROTEUS ATLAS



ELATION®

500W LILI (Laser Illuminated Lighting Instrument) light engine FX Fixture

UNIT DIMENSIONS



Specifications are subject to change without notice ©Elation Professional 05/06/2025
Elation Professional USA | 6122 S. Eastern Ave. | Los Angeles, CA. 90040
323-582-3322 | 323-832-9142 fax | www.elationlighting.com | info@elationlighting.com

Elation Professional B.V. | Junostraat 2 | 6468 EW Kerkrade, The Netherlands
+31 45 546 85 66 | +31 45 546 85 96 fax | www.elationlighting.eu | info@elationlighting.eu



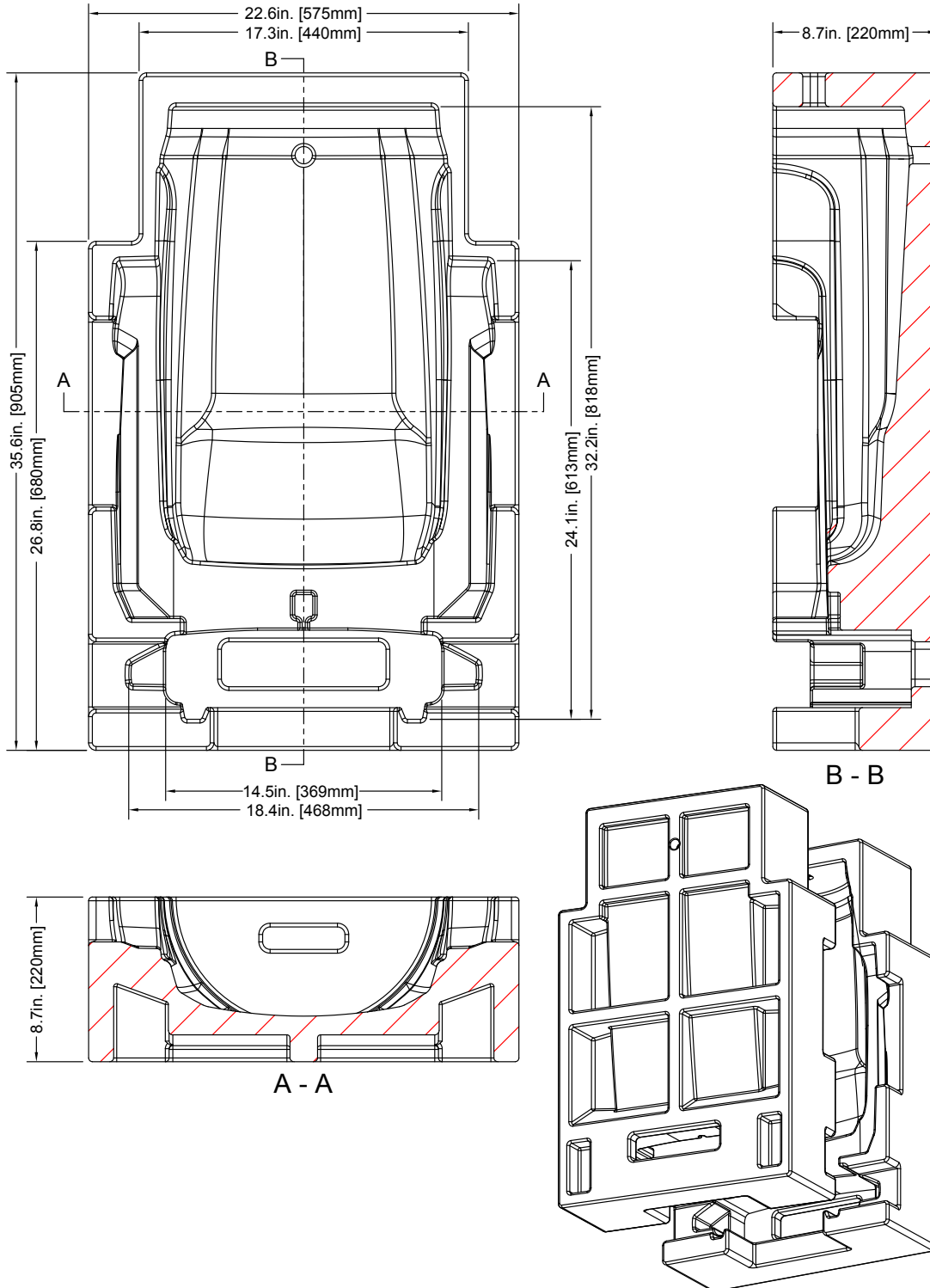
PROTEUS ATLAS



ELATION®

500W LILI (Laser Illuminated Lighting Instrument) light engine FX Fixture

FOAM IN-LAY DIMENSIONS



ELATION®

Specifications are subject to change without notice ©Elation Professional 05/06/2025
Elation Professional USA | 6122 S. Eastern Ave. | Los Angeles, CA. 90040
323-582-3322 | 323-832-9142 fax | www.elationlighting.com | info@elationlighting.com

Elation Professional B.V. | Junostraat 2 | 6468 EW Kerkrade, The Netherlands
+31 45 546 85 66 | +31 45 546 85 96 fax | www.elationlighting.eu | info@elationlighting.eu