



# PROTEUS LUCIUS OPS

580W Peak Field LED Compact IP66  
Framing Profile Fixture with CMY



# ELATION®

## DATA SHEET



### KEY FEATURES

IP66 Outdoor Rated

High Efficiency 580W 6,500K White LED Engine

Up to 33,500 Total Lumen Fixture Output

Peak Field engine for powerful projection at long distances

CMY Color Mixing and Variable CTO

5-Position Color Wheel with High CRI Filter

Complete FX System featuring Dual Rotating and Fixed Gobo Wheel,

Animation, Iris, Dual Prism, Dual Frost

Indexable Full Blackout Framing System

Wide Zoom Range from 5.5° to 50°

ELATION OPS - Designed for permanent outdoor installations

CX Extreme Marine Grade Coating

The **PROTEUS LUCIUS OPS™** is a powerful yet compact IP66-rated LED profile fixture offering outstanding projection and beam qualities in any environment.

Providing up to 33,500 lumens output from its custom-designed Peak Field 580W 6,500K LED engine, the **PROTEUS LUCIUS OPS** is the ideal fixture for any outdoor or indoor application requiring superior output, bright and powerful beams, and quiet operation, as well as stunningly precise gobos and colors. **PROTEUS LUCIUS OPS** provides the designer a comprehensive FX package with 13 rotating and 7 fixed glass gobos, full animation wheel, overlapping dual prisms, dual frost and a high-speed iris. Its indexable framing system allows full-blackout shutter cuts for precise beam shape control.

With a fast zoom range from 5.5° to 50° out of an impressively compact fixture design, the **PROTEUS LUCIUS OPS** has the power to cut through and make a statement on any stage.

**ELATION OPS** fixtures are optimized for permanent exterior installations. Utilizing CX Extreme Marine Grade Coatings, cabling and Stainless-Steel fasteners they are rugged, reliable and designed to withstand the elements.



Specifications are subject to change without notice ©Elation Professional 03/19/2025  
Elation Professional USA | 6122 S. Eastern Ave. | Los Angeles, CA. 90040  
323-582-3322 | 323-832-9142 fax | [www.elationlighting.com](http://www.elationlighting.com) | [info@elationlighting.com](mailto:info@elationlighting.com)

Elation Professional B.V. | Junostraat 2 | 6468 EW Kerkrade, The Netherlands  
+31 45 546 85 66 | +31 45 546 85 96 fax | [www.elationlighting.eu](http://www.elationlighting.eu) | [info@elationlighting.eu](mailto:info@elationlighting.eu)



# PROTEUS LUCIUS OPS

580W Peak Field LED Compact IP66  
Framing Profile Fixture with CMY



## SPECIFICATIONS

### SOURCE

580W 6,500K Bright White Peak Field LED  
Engine  
30,000 Hour Average LED Life\*

\*Test lab conditions. May vary depending on several factors including  
but not limited to:

Environmental Conditions, Power/Voltage, Usage Patterns (On-Off  
Cycling), Control, and Dimming.

### PHOTOMETRIC DATA

33,500 Total Lumen Fixture Output  
CRI 71+ (85+ with HCRI Filter)  
2.5:1 Hotspot Ratio  
Zoom Range 5.5° - 50°  
Beam Angle 6° - 36.7°  
Field Angle 7.6° - 51.3°

### EFFECTS

Motorized Zoom  
4 Rotating Full Blackout Framing Blades  
+/-45° Framing Indexing  
Full 360° Bi-Directional Animation Wheel  
4-Facet and Linear Rotating Prisms  
2 Variable Frost Filters (Light and Wash)  
Internal Color, Framing, Prism, and Frost  
Macros  
Motorized Iris with Variable Pulse Effects  
Variable 16-bit Dimming Curve Modes  
High Speed Electronic Shutter and Strobe  
DMX Controllable LED Refresh Rate  
Pan Angle: 540°/630°  
Tilt Angle: 250°

### EXTERIOR FINISH

RAL9016 (custom colors available on request)  
CX Extreme Marine Grade Coating  
Stainless Steel 316 Fasteners

### COLOR

CMY Color Mixing  
Linear CTO Color Correction  
5 Dichroic Colors including High CRI Filter

### CONTROL / CONNECTIONS

2 DMX Channel Modes (43/68 Ch.)  
DMX and RDM Protocol Support  
(6) Button Touch Control Panel  
Full Color 180° Reversible LCD Menu Display  
NFC Support  
10' (3m) DMX In/Out combo cable  
10' (3m) Power cable

### SIZE / WEIGHT

Length: 18.41 in (468mm)  
Width: 14.6 in (370mm)  
Height: 26.8 in (682mm)  
Center-to-Center Spacing 24.6 in (626mm)  
Weight: 89.9 lbs. (40.8 kg)

### ELECTRICAL / THERMAL

AC 100-240V 50/60Hz  
Max Power Consumption 1000W  
-4° to 122°F (-20°C to 50°C)  
BTU/hr (+/- 10%) 3239.5

### GOBOS

3 Gobo Wheels  
6 Rotating Gobo (Wheel #1)  
7 Rotating Gobos (Wheel #2)  
7 Static Gobos (Wheel #3)

### INCLUDED ITEMS

Omega Brackets (x2)  
Safety Cable

### APPROVALS / RATINGS

CE | cETLus | FCC | IP66



Specifications are subject to change without notice ©Elation Professional 03/19/2025  
Elation Professional USA | 6122 S. Eastern Ave. | Los Angeles, CA. 90040  
323-582-3322 | 323-832-9142 fax | [www.elationlighting.com](http://www.elationlighting.com) | [info@elationlighting.com](mailto:info@elationlighting.com)

Elation Professional B.V. | Junostraat 2 | 6468 EW Kerkrade, The Netherlands  
+31 45 546 85 66 | +31 45 546 85 96 fax | [www.elationlighting.eu](http://www.elationlighting.eu) | [info@elationlighting.eu](mailto:info@elationlighting.eu)



# PROTEUS LUCIUS OPS

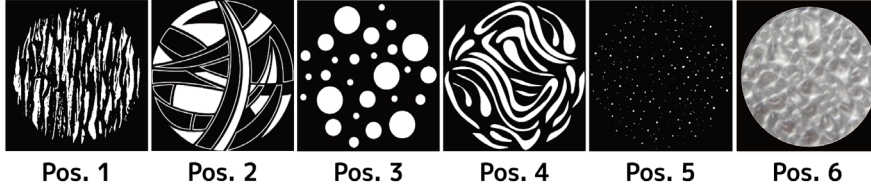
580W Peak Field LED Compact IP66  
Framing Profile Fixture with CMY



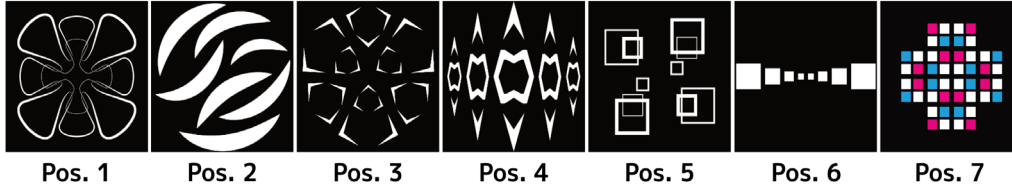
GOBOS | COLORS | ANIMATION WHEEL

# ELATION®

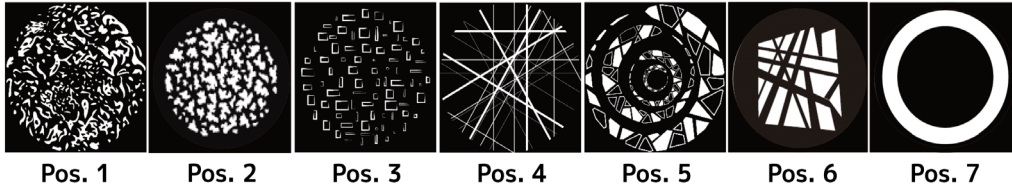
## INTERCHANGEABLE – ROTATING GLASS GOBO WHEEL



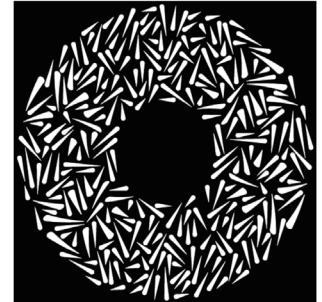
## INTERCHANGEABLE – ROTATING GLASS GOBO WHEEL



## INTERCHANGEABLE STATIC – FIXED GLASS GOBO WHEEL



## ANIMATION WHEEL



## COLOR FLAGS



## COLOR WHEEL



## ORDERING INFORMATION

PRL734		PROTEUS LUCIUS OPS
TRIGGER CLAMP	1741000032	Heavy Duty Wrap Around Hook Style Clamp
TOU027	N/A	5 ft. (1.5m) IP65 5pin XLR Cable



Specifications are subject to change without notice ©Elation Professional 03/19/2025  
Elation Professional USA | 6122 S. Eastern Ave. | Los Angeles, CA. 90040  
323-582-3322 | 323-832-9142 fax | [www.elationlighting.com](http://www.elationlighting.com) | [info@elationlighting.com](mailto:info@elationlighting.com)

Elation Professional B.V. | Junostraat 2 | 6468 EW Kerkrade, The Netherlands  
+31 45 546 85 66 | +31 45 546 85 96 fax | [www.elationlighting.eu](http://www.elationlighting.eu) | [info@elationlighting.eu](mailto:info@elationlighting.eu)



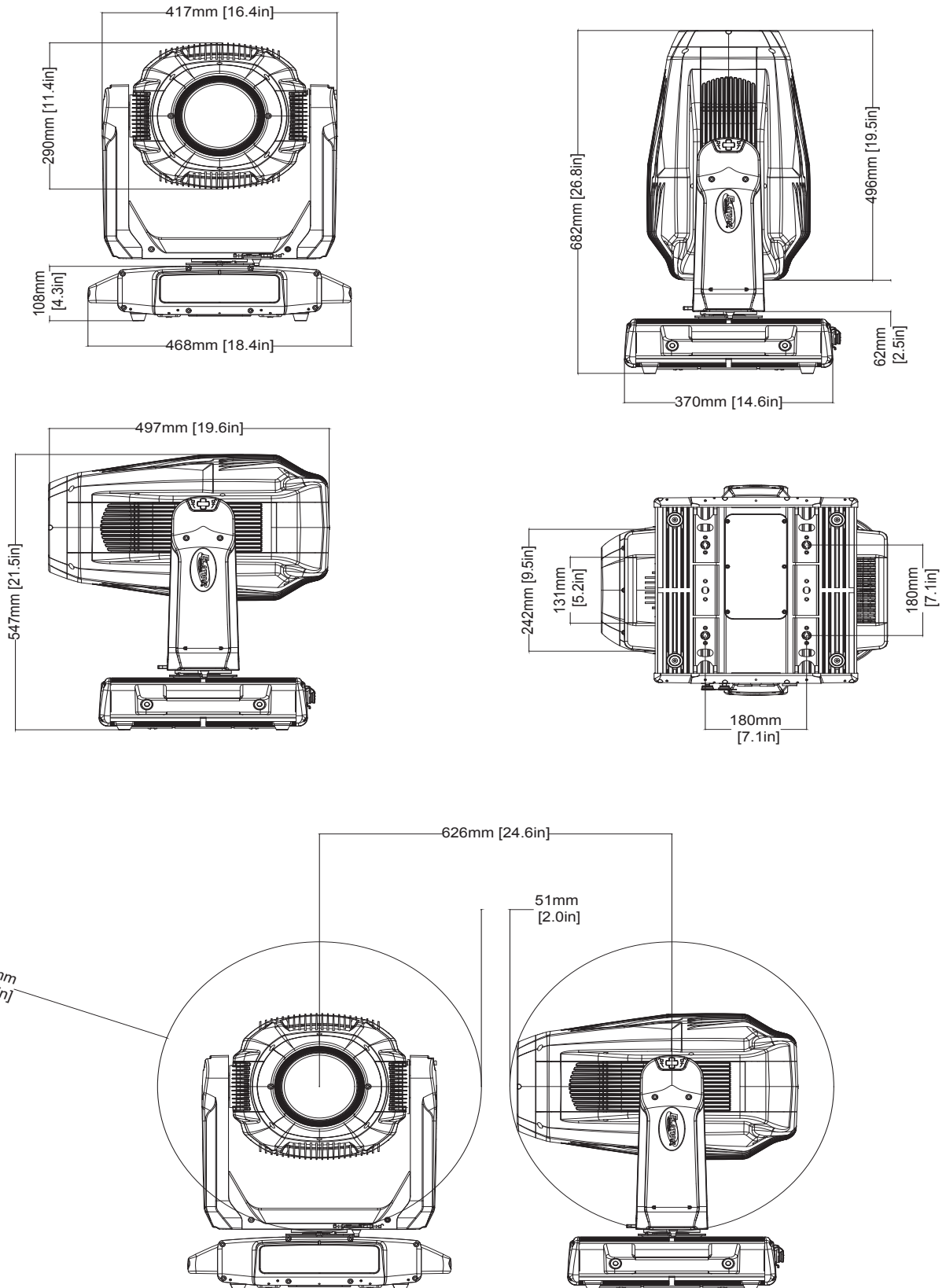
# PROTEUS LUCIUS OPS

580W Peak Field LED Compact IP66  
Framing Profile Fixture with CMY



# ELATION®

## UNIT DIMENSIONS



Specifications are subject to change without notice ©Elation Professional 03/19/2025  
Elation Professional USA | 6122 S. Eastern Ave. | Los Angeles, CA. 90040  
323-582-3322 | 323-832-9142 fax | [www.elationlighting.com](http://www.elationlighting.com) | [info@elationlighting.com](mailto:info@elationlighting.com)

Elation Professional B.V. | Junostraat 2 | 6468 EW Kerkrade, The Netherlands  
+31 45 546 85 66 | +31 45 546 85 96 fax | [www.elationlighting.eu](http://www.elationlighting.eu) | [info@elationlighting.eu](mailto:info@elationlighting.eu)



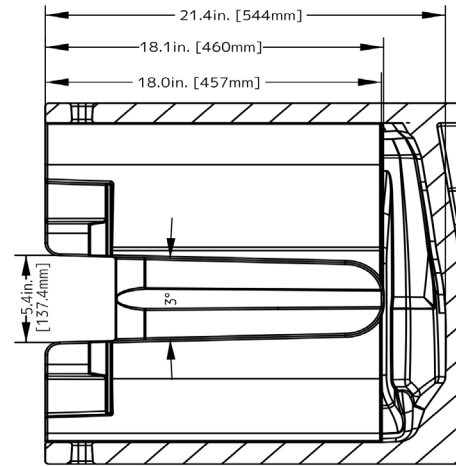
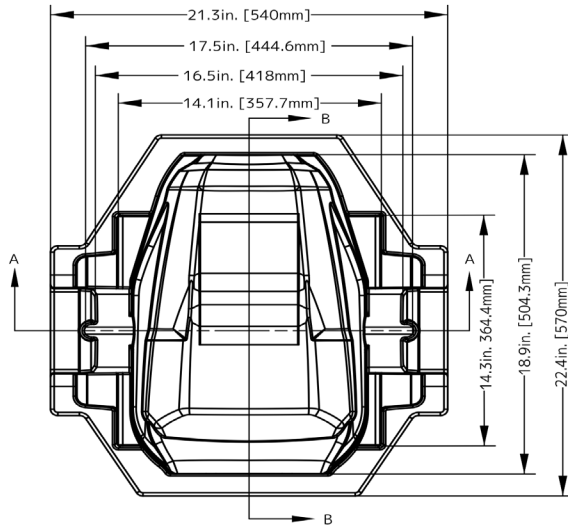
# PROTEUS LUCIUS OPS

580W Peak Field LED Compact IP66  
Framing Profile Fixture with CMY

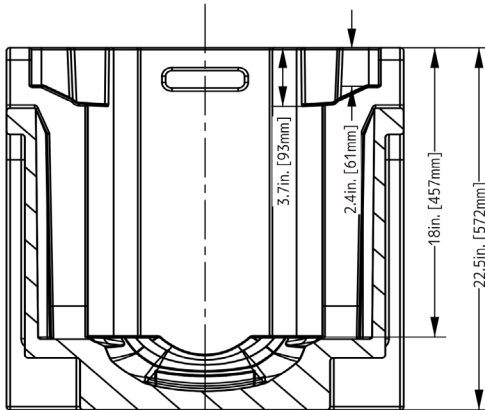


# ELATION®

## FOAM IN-LAY DIMENSIONS



B-B



A-A

