



**PRODUCT SPECIFICATIONS**

**SOURCE**

(5) 150W RGB 3-in-1 COB LEDs  
100,000 Hour Average Lamp Life

**PHOTOMETRIC DATA (60° Full ON)**

4,170 LUX 387 FC @3.3' (1m)  
1,150 LUX 107 FC @6.6' (2m)  
540 LUX 50 FC @9.8' (3m)  
253 LUX 24 FC @13.1' (4m)  
157 LUX 15 FC @16.4' (5m)

**EFFECTS**

Individual Pixel Control  
Strobe and Zone Chase Effects  
Selectable Dimming Curves

**COLOR**

RGB

**CONTROL / CONNECTIONS**

(5) DMX Channel Modes (3 / 6 / 7 / 15 / 19)  
RDM (Remote Device Management)  
4 Button Touch Control Panel  
3pin/5pin DMX In/Out  
Power In/Out

**SIZE / WEIGHT**

Length: 21.6" (550mm)  
Width: 6.4" (161.2mm)  
Vertical Height: 6.8" (172.5mm)  
Weight: 13.9 lbs. (6.3 kg)

**ELECTRICAL / THERMAL**

AC 100-240V - 50/60Hz  
150W Max Power Consumption  
14°F to 113°F (-10°C to 45°C)

**APPROVALS / RATINGS**

CE | cETLus | IP20

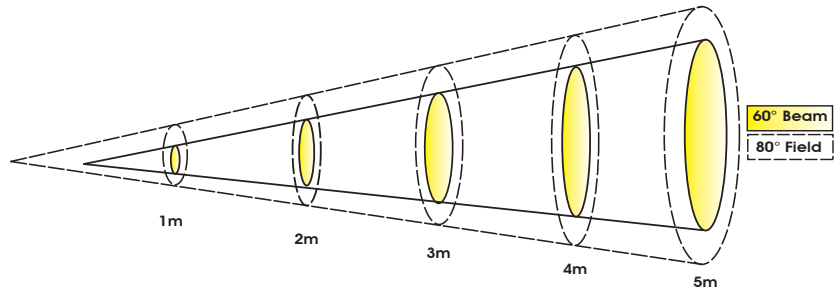
**INSTALLATION**

Rigging: Clamps (Not Included)  
Working Position: Any (360°)

**INCLUDED ITEMS**

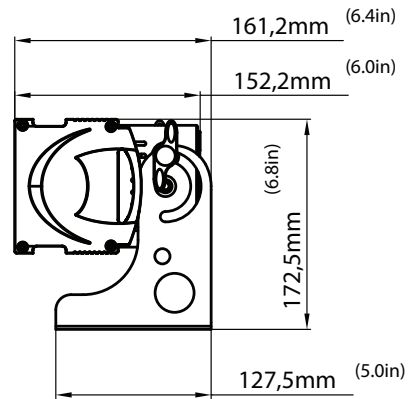
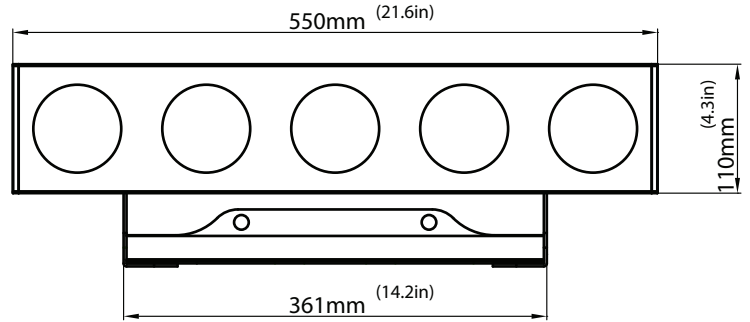
powerCON Cable

**PHOTOMETRIC DATA**



	1 m	3.3 ft	2 m	6.6 ft	3 m	9.8 ft	4 m	13.1 ft	5 m	16.4 ft
60° Beam Diameter	1.7	5.6	2.4	7.9	3.5	11.5	4.6	15.1	5.8	19.0
80° Field Diameter	2.2	7.2	3.4	11.2	5	16.4	6.7	22.0	8.4	27.6
	lux	fc	lux	fc	lux	fc	lux	fc	lux	fc
RED LEDs	1,169	109	315	29	151	14	84	8	57	5
GREEN LEDs	1,199	111	332	31	156	14	85	8	57	5
BLUE LEDs	1,880	175	508	47	232	22	133	12	86	8
FULL ON	4,170	387	1,150	107	540	50	253	24	157	15

**DIMENSIONAL DIAGRAMS**



**OPTIONAL ACCESSORIES**

ORDER CODE	ITEM
CUE283/15LK	CUEPIX Strip TRI & WW 15 Degree Lens Kit
TRIGGER CLAMP	Heavy Duty Wrap Around Hook Style Clamp
EWDMSYSTEM	Wireless DMX System (1 Transmitter, 1 Receiver)
PLC3	3' (1m) PowerCON PRO Link Cable
AC3PDMX5PRO	5 ft. (1.5m) 3pin PRO DMX Cable
AC5PDMX5PRO	5 ft. (1.5m) 5pin PRO DMX Cable
	Additional cable lengths available



Specifications are subject to change without notice ©Elation Professional 07/15

Elation Professional USA | 6122 S. Eastern Ave. | Los Angeles, CA. 90040  
323-582-3322 | 323-832-9142 fax | www.elationlighting.com | info@elationlighting.com

Elation Professional B.V. | Junostraat 2 | 6468 EW Kerkrade, Netherlands  
+31 45 546 85 66 | +31 45 546 85 96 fax | www.elationlighting.eu | info@elationlighting.eu