

5 Lumen/Watt

CRI: 66.9

3168 K

Peak: 1699107 cd

PF: 1.0



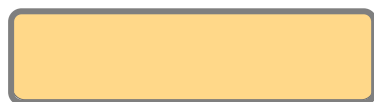
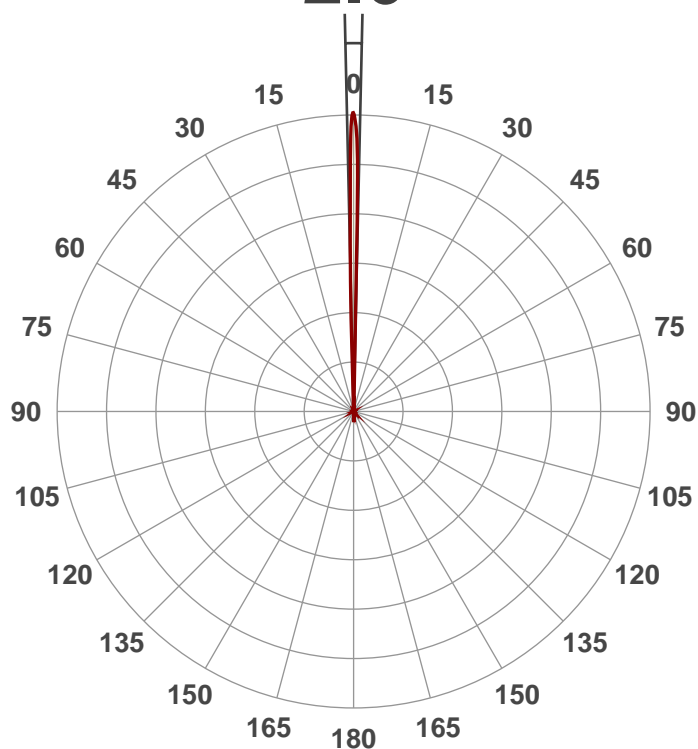
Platinum FLX

Spot CTO color Zoom In

1/26/2018

Note:

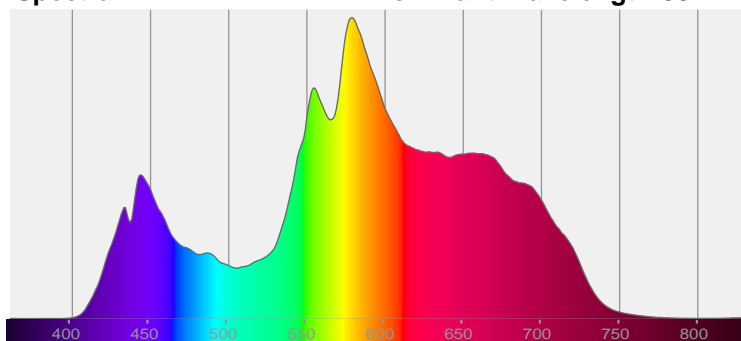
2.6°



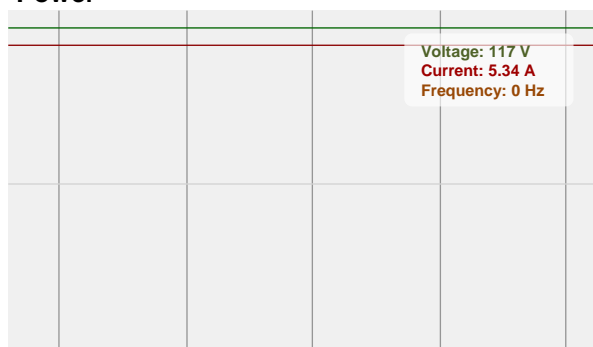
CIE 1931
x: 0.416
y: 0.378

Spectra

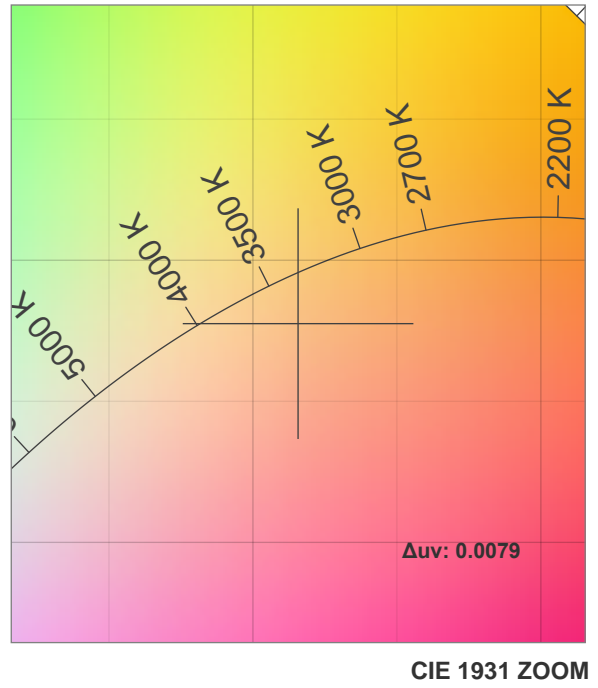
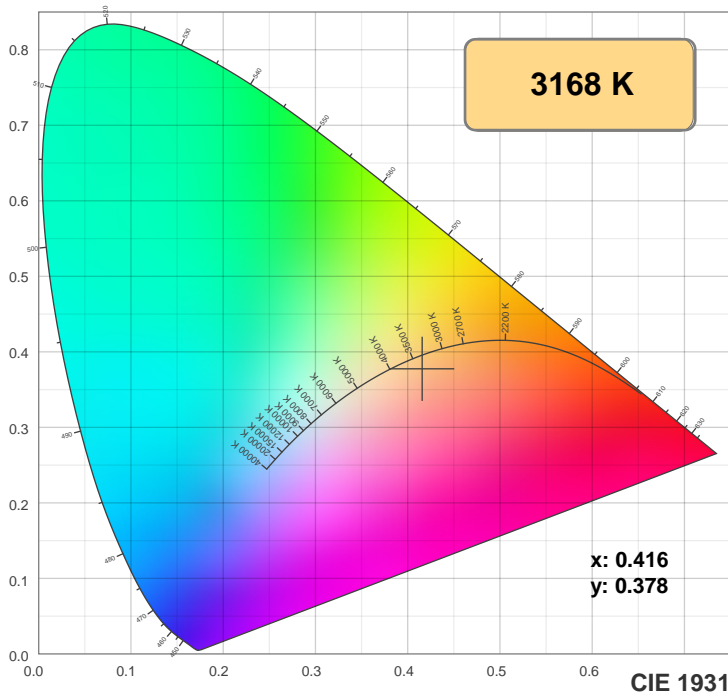
Dominant Wavelength:587nm



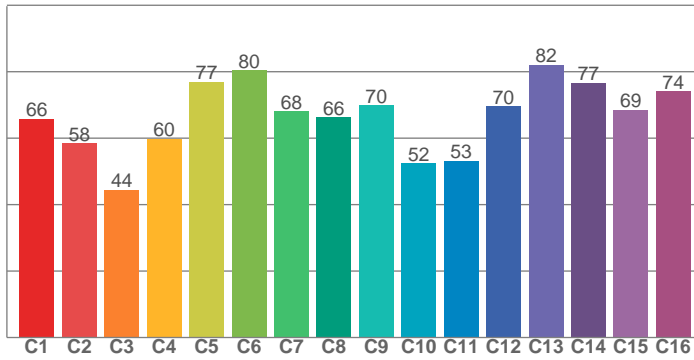
Power



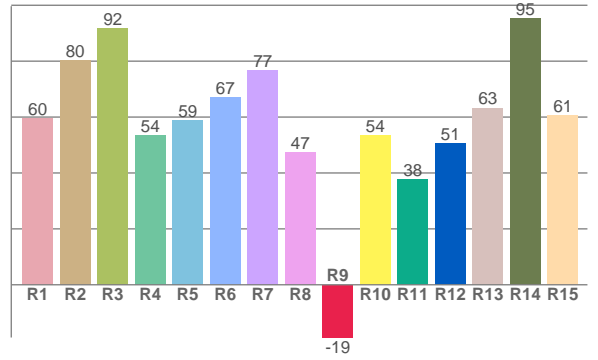
Color Details



TM30: 65.9



CRI: 66.9 (R1-R8)



CRI R values, only R1-R8 are used to calculate final CRI value

R1	R2	R3	R4	R5	R6	R7	R8	R9	R10	R11	R12	R13	R14	R15
59.6	80.2	91.7	53.6	58.9	67.0	76.6	47.3	-18.9	53.6	37.7	50.7	63.3	95.3	60.7

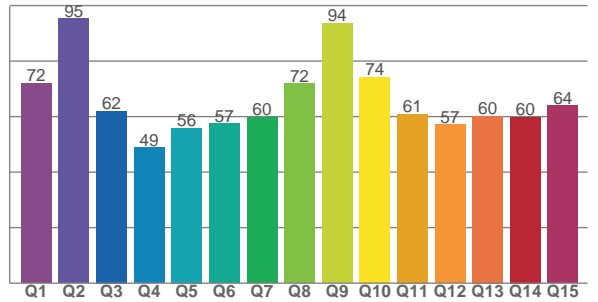
TM30 C values, 16 binned values out of total of 99 C values

C1	C2	C3	C4	C5	C6	C7	C8	C9	C10	C11	C12	C13	C14	C15	C16
65.7	58.4	44.4	59.9	76.9	80.4	68.1	66.3	69.9	52.4	53.2	69.6	82.0	76.7	68.6	74.1

CQS Q values

Q1	Q2	Q3	Q4	Q5	Q6	Q7	Q8	Q9	Q10	Q11	Q12	Q13	Q14	Q15
72.0	95.3	62.0	48.9	55.9	57.5	59.8	71.9	93.6	74.2	60.9	57.0	60.2	59.9	64.0

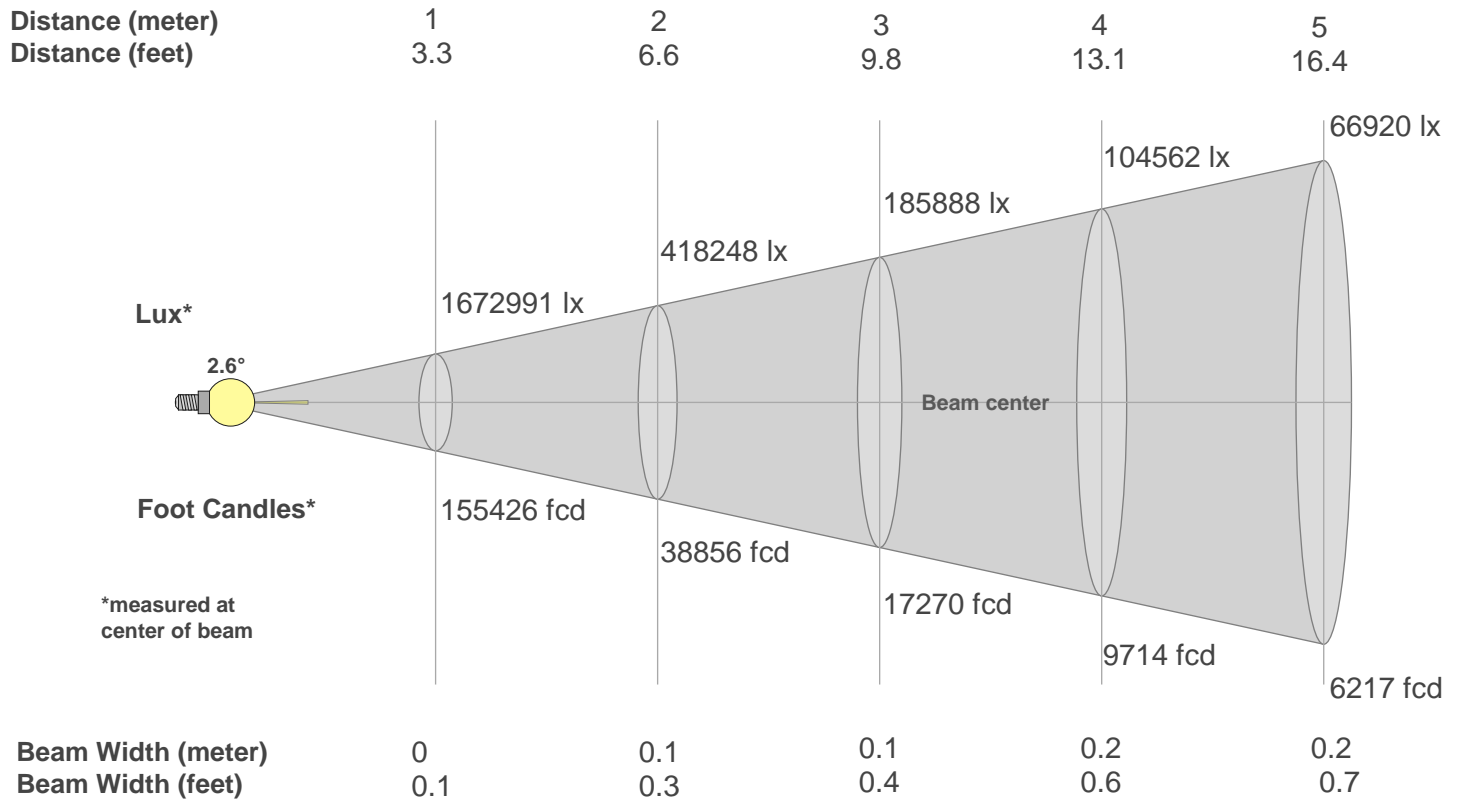
CQS: 63.8



Color Parameters

Color Temperature	Color Rendering Index	Red Component	Color Fidelity	Color Gamut	Color Quality Scale	Color Coordinate CIE 1931	Color Coordinate CIE 1931	Color Coordinate	Color Coordinate	Color Deviation from Black Body
CCT	CRI	CRI R9	TM30 Rf	TM30 Rg	CQS	x	y	u	v	Δuv
3168 K	66.9	-18.9	65.9	92.1	63.8	0.416	0.378	0.248	0.338	0.0079

Beam Details



Beam Intensities from 1-20m

m	1	2	3	4	5	6	7	8	9	10	11	12	13	14	15	16	17	18	19	20
ft	3.3	6.6	9.8	13.1	16.4	19.7	23	26.2	29.5	32.8	36.1	39.4	42.7	45.9	49.2	52.5	55.8	59.1	62.3	65.6
lx	16729 91	418248	185888	104562	66920	46472	34143	26140	20654	16730	13826	11618	9899	8536	7436	6535	5789	5164	4634	4182
fcd	15542 5.9	38856.5	17269.5	9714.1	6217	4317.4	3172	2428.5	1918.8	1554.3	1284.5	1079.3	919.7	793	690.8	607.1	537.8	479.7	430.5	388.6

Intensities in 0° C-plane

0°	1°	2°	3°	4°	5°	6°	7°	8°	9°	10°	11°	12°	13°	14°	15°	16°	17°	18°	19°
1.7M	1.1M	0.1M	0.0M	0.0M	0.0M	0.0M	0.0M	0.0M	0.0M	0.0M	0.0M	0.0M	0.0M	0.0M	0.0M	0.0M	0.0M	0.0M	0.0M
100%	69%	9%	0%	0%	0%	0%	0%	0%	0%	0%	0%	0%	0%	0%	0%	0%	0%	0%	0%

Intensities in 90° C-plane

0°	1°	2°	3°	4°	5°	6°	7°	8°	9°	10°	11°	12°	13°	14°	15°	16°	17°	18°	19°
1.7M	1.1M	0.1M	0.0M	0.0M	0.0M	0.0M	0.0M	0.0M	0.0M	0.0M	0.0M	0.0M	0.0M	0.0M	0.0M	0.0M	0.0M	0.0M	0.0M
100%	69%	9%	0%	0%	0%	0%	0%	0%	0%	0%	0%	0%	0%	0%	0%	0%	0%	0%	0%

Intensities in 180° C-plane

0°	1°	2°	3°	4°	5°	6°	7°	8°	9°	10°	11°	12°	13°	14°	15°	16°	17°	18°	19°
1.7M	1.3M	0.1M	0.0M	0.0M	0.0M	0.0M	0.0M	0.0M	0.0M	0.0M	0.0M	0.0M	0.0M	0.0M	0.0M	0.0M	0.0M	0.0M	0.0M
100%	77%	4%	0%	0%	0%	0%	0%	0%	0%	0%	0%	0%	0%	0%	0%	0%	0%	0%	0%

Intensities in 270° C-plane

0°	1°	2°	3°	4°	5°	6°	7°	8°	9°	10°	11°	12°	13°	14°	15°	16°	17°	18°	19°
1.7M	1.3M	0.1M	0.0M	0.0M	0.0M	0.0M	0.0M	0.0M	0.0M	0.0M	0.0M	0.0M	0.0M	0.0M	0.0M	0.0M	0.0M	0.0M	0.0M
100%	77%	4%	0%	0%	0%	0%	0%	0%	0%	0%	0%	0%	0%	0%	0%	0%	0%	0%	0%

Beam Angle 50%	Field Angle 10%	Cutoff Angle 2,5%	Intensity Ratio in 120° Cone	Intensity Ratio in 90° Cone
2.6°	3.7°	4.3°	98.3%	98.1%