

Color Temperature:



Total Lumen Output:
3160 lm

Light Quality:

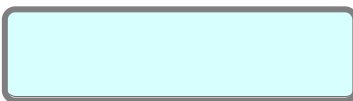


Peak:
23143 cd

Light Efficiency:



Power: 70.9 W



CIE 1931
x: 0.317
y: 0.334

Test: White

Date: 7/2/2018

Voltage: 115 V

Current: 0.671 A

Frequency: 60 Hz

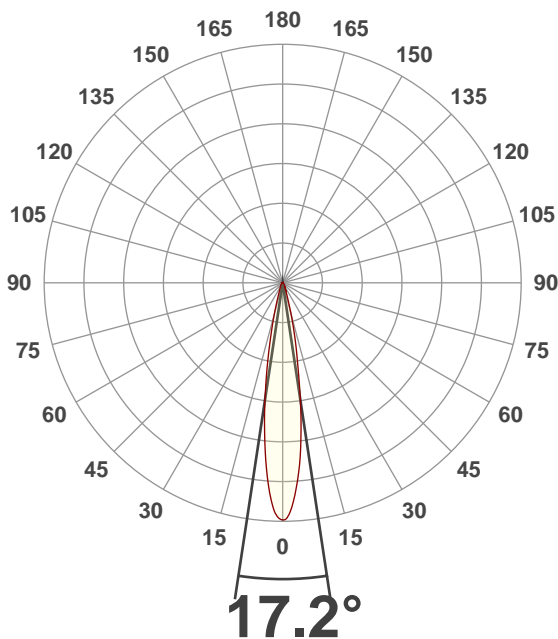
CRI: 69.8

CQS: 69.6

TM30: 67.2

Note:

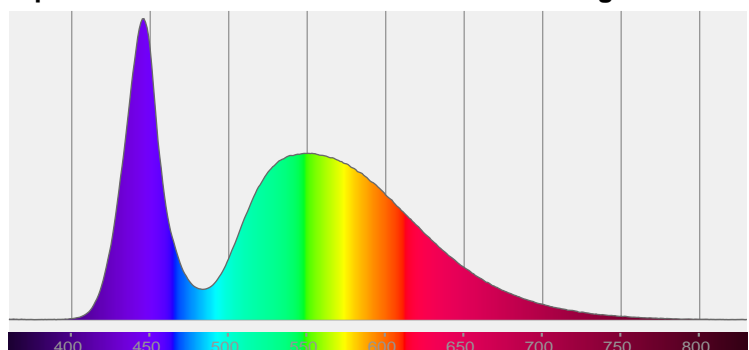
Beam Angle



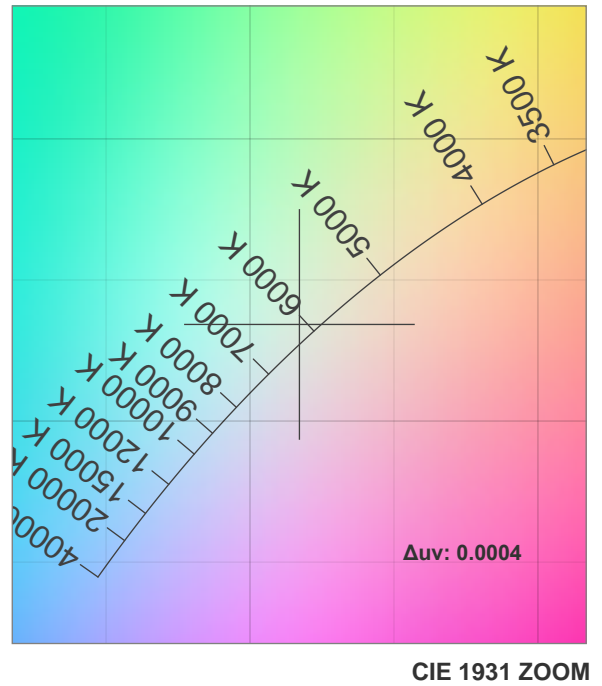
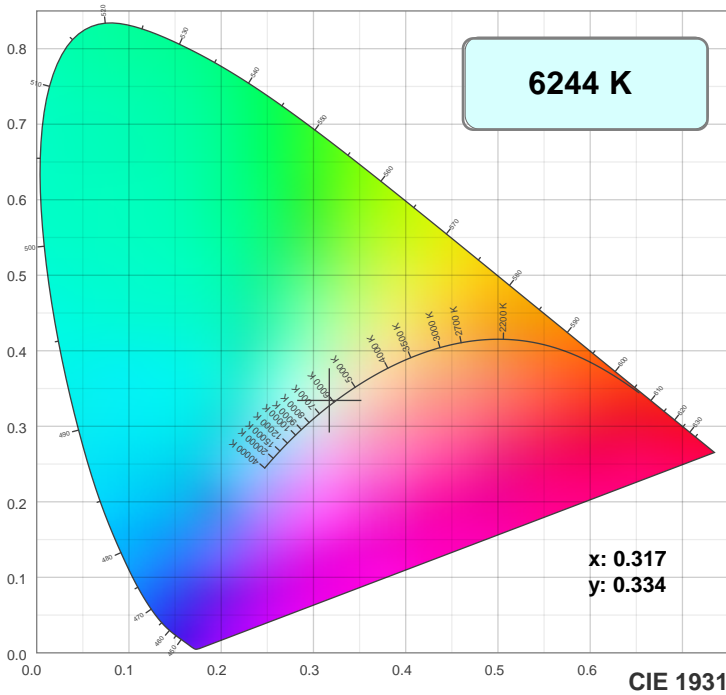
Beam Angle 50%	Field Angle 10%	Cutoff Angle 2.5%
17.2°	32.5°	52°

Spectra

Dominant Wavelength: 575nm

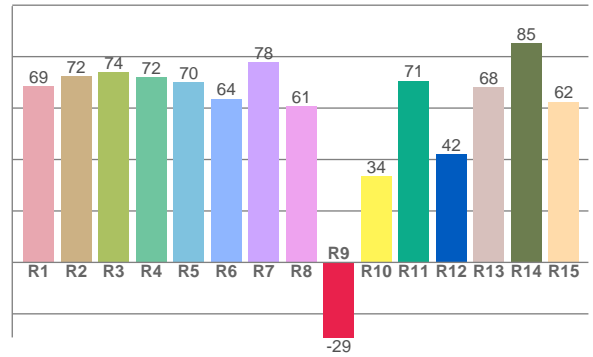
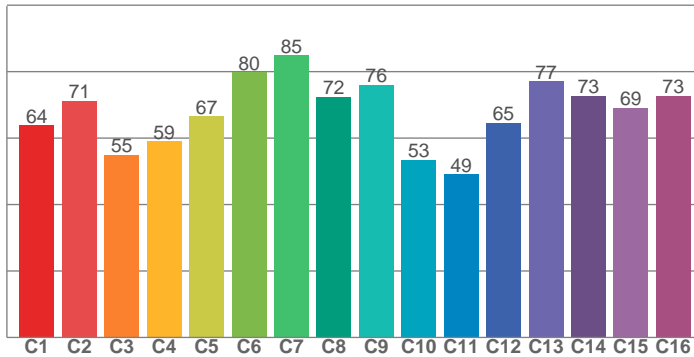


Color Details



TM30: 67.2

CRI: 69.8 (R1-R8)



CRI R values, only R1-R8 are used to calculate final CRI value

R1	R2	R3	R4	R5	R6	R7	R8	R9	R10	R11	R12	R13	R14	R15
68.6	72.3	73.8	72.1	69.9	63.6	77.7	60.6	-29.2	33.5	70.7	42.2	68.1	85.1	62.4

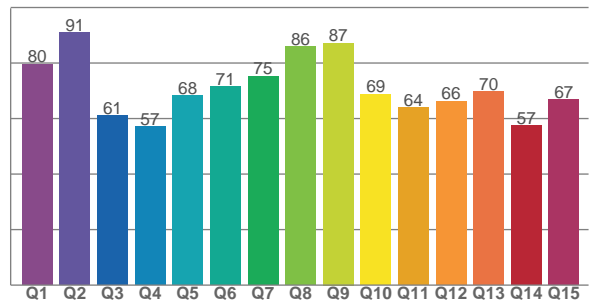
TM30 C Values, 16 binned values out of total of 99 C values

C1	C2	C3	C4	C5	C6	C7	C8	C9	C10	C11	C12	C13	C14	C15	C16
63.8	71.2	54.9	59.0	66.5	79.7	84.9	72.4	76.0	53.5	49.1	64.5	77.0	72.6	69.1	72.7

CQS Q Values

Q1	Q2	Q3	Q4	Q5	Q6	Q7	Q8	Q9	Q10	Q11	Q12	Q13	Q14	Q15
79.6	90.9	61.0	57.1	68.3	71.5	75.3	86.0	87.3	68.7	63.9	66.3	69.7	57.5	66.8

CQS: 69.6



Color Parameters

Color Temperature	Color Rendering Index	Red Component	Color Fidelity	Color Gamut	Color Quality Scale	Color Coordinate CIE 1931	Color Coordinate CIE 1931	Color Coordinate	Color Coordinate	Color Deviation from Black Body
CCT	CRI	CRI R9	TM30 Rf	TM30 Rg	CQS	x	y	u	v	Δuv
6244 K	69.8	-29.2	67.2	95.0	69.6	0.317	0.334	0.199	0.315	0.0004

TM30 Details

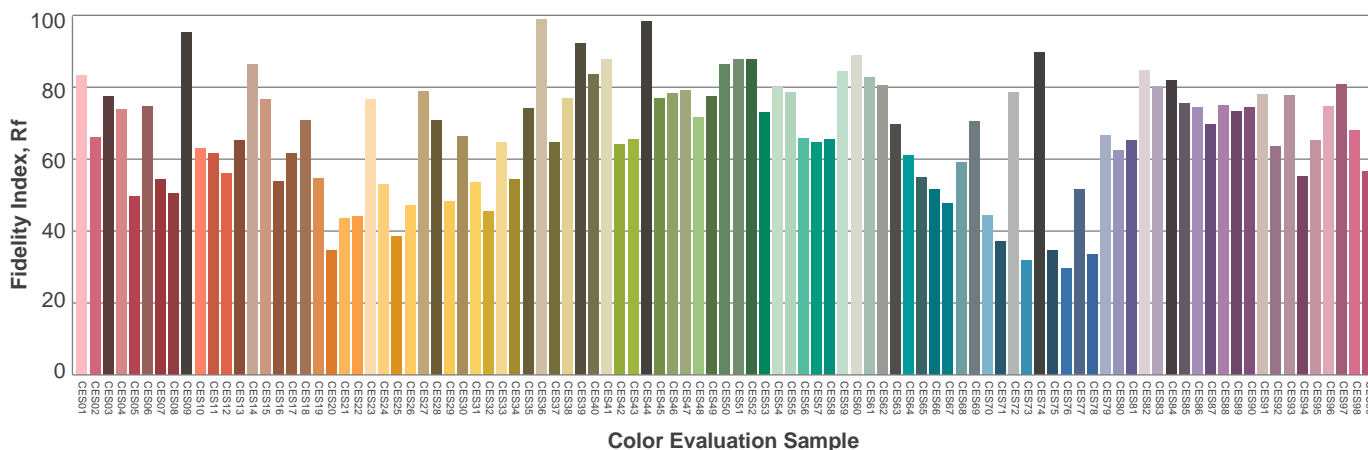
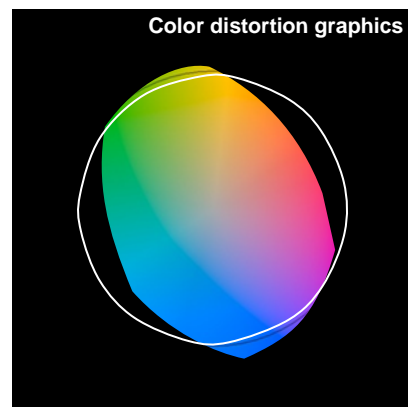
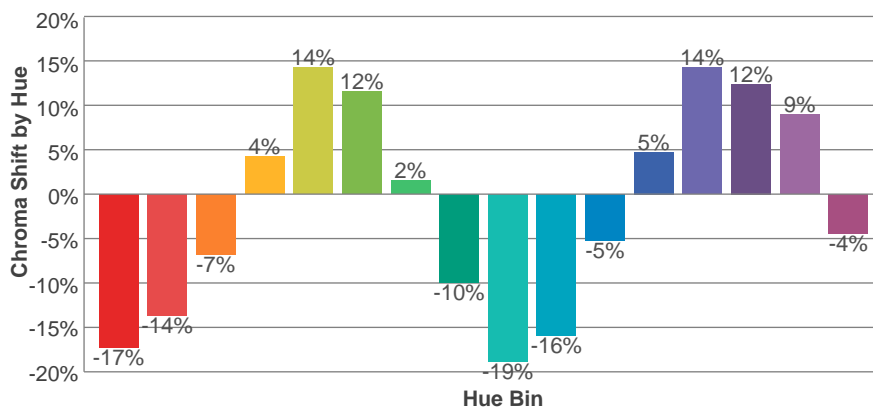
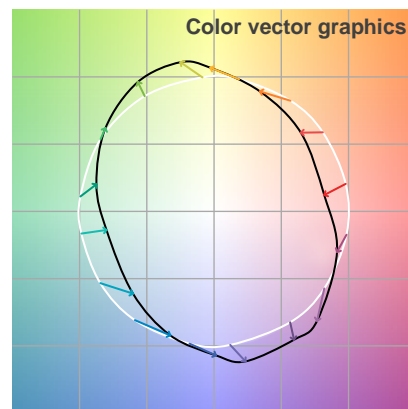
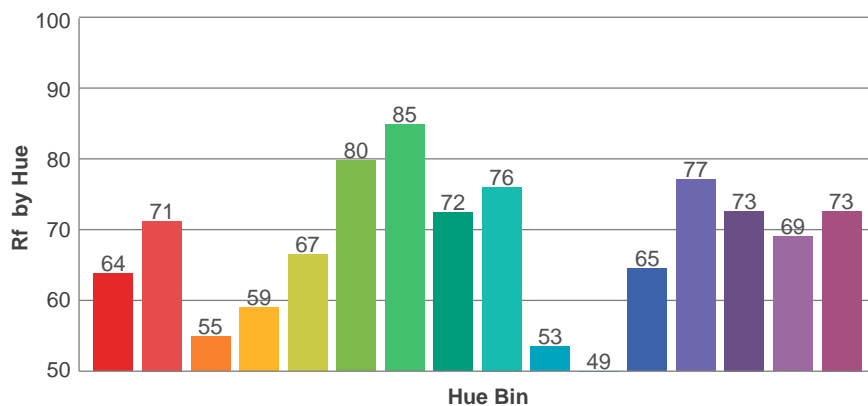
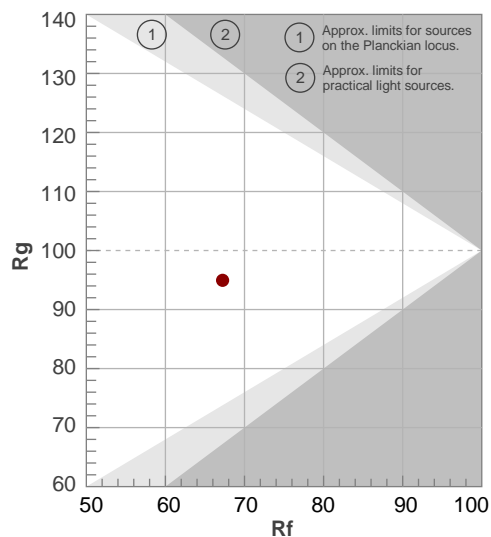
Rf 67.2

Fidelity Index Rf

Rg 95.0

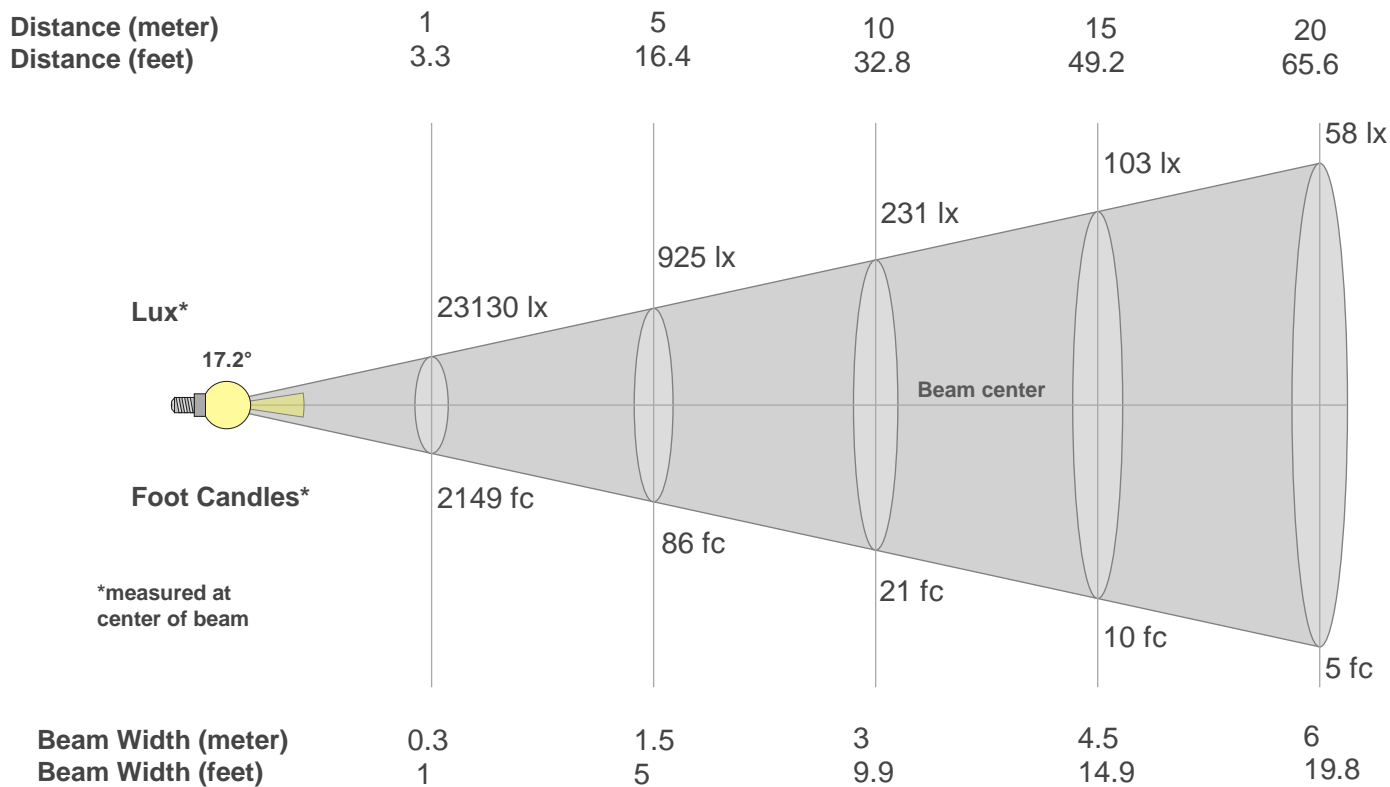
Gamut Index Rg

Hue Bin	R _f	Graphic shifts (%)	
		Chroma	Hue
1	64	-17%	-5%
2	71	-14%	9%
3	55	-7%	23%
4	59	4%	23%
5	67	14%	14%
6	80	12%	-2%
7	85	2%	-9%
8	72	-10%	-11%
9	76	-19%	1%
10	53	-16%	20%
11	49	-5%	28%
12	65	5%	21%
13	77	14%	9%
14	73	12%	-5%
15	69	9%	-23%
16	73	-4%	-14%



Color Evaluation Sample

Beam Details



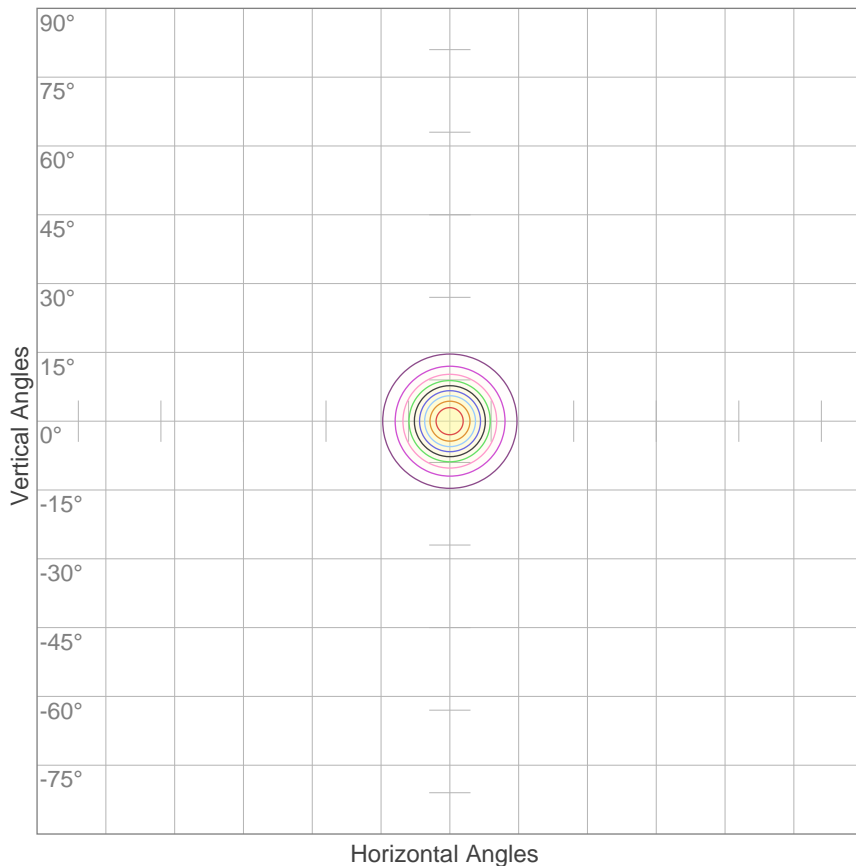
Beam Intensities from 1-20m

m	1	2	3	4	5	6	7	8	9	10	11	12	13	14	15	16	17	18	19	20
ft	3.3	6.6	9.8	13.1	16.4	19.7	23	26.2	29.5	32.8	36.1	39.4	42.7	45.9	49.2	52.5	55.8	59.1	62.3	65.6
lx	23130	5783	2570	1446	925	643	472	361	286	231	191	161	137	118	103	90	80	71	64	58
fc	2148.9	537.2	238.8	134.3	86	59.7	43.9	33.6	26.5	21.5	17.8	14.9	12.7	11	9.6	8.4	7.4	6.6	6	5.4

Beam Angle 50%	Field Angle 10%	Cutoff Angle 2,5%	Intensity Ratio in 120° Cone	Intensity Ratio in 90° Cone
17.2°	32.5°	52°	99.2%	94.6%

ISO Diagrams

ISO Candela Diagram



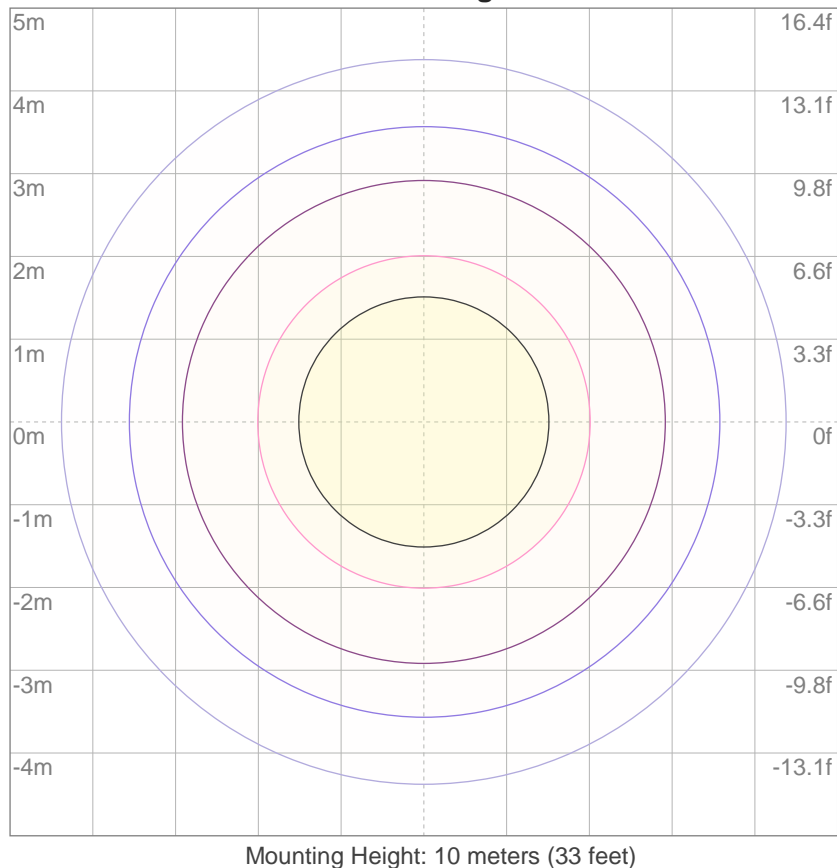
10%	2313 cd
20%	4626 cd
30%	6939 cd
40%	9252 cd
50%	11565 cd
60%	13878 cd
70%	16191 cd
80%	18504 cd
90%	20817 cd

Conditions:

Number of c-planes: 2

Candela at center: 23130 cd

ISO Lux Diagram



3%	6.94 lx
5%	11.6 lx
10%	23.1 lx
30%	69.4 lx
50%	116 lx

Conditions:

Number of c-planes: 2

Lux at center: 231 lx

Lux distribution on a surface when lamp is mounted at 10 meters from the surface.