

Color Temperature:



Total Lumen Output:
3678 lm

Light Quality:

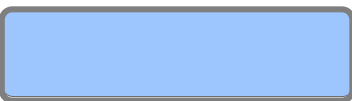


Peak:
28137 cd

Light Efficiency:



Power: 187 W



CIE 1931
x: 0.271
y: 0.256

Test: Full On

Date: 10/9/2018

Voltage: 113 V

Current: 1.66 A

Frequency: 60 Hz

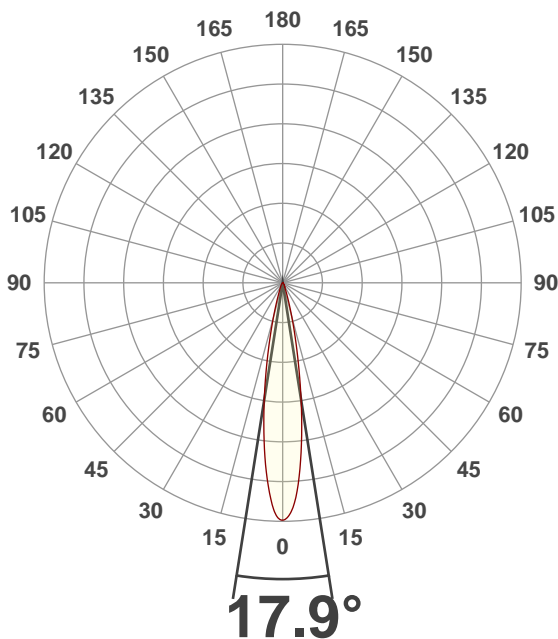
CRI: 80.2

CQS: 86.8

TM30: 78.5

Note:

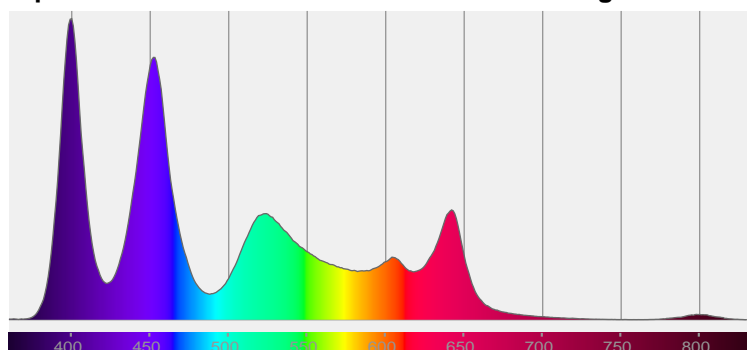
Beam Angle



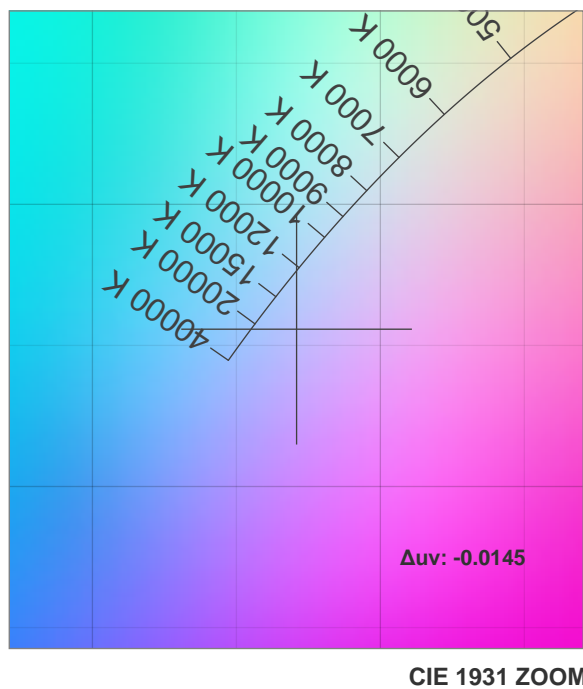
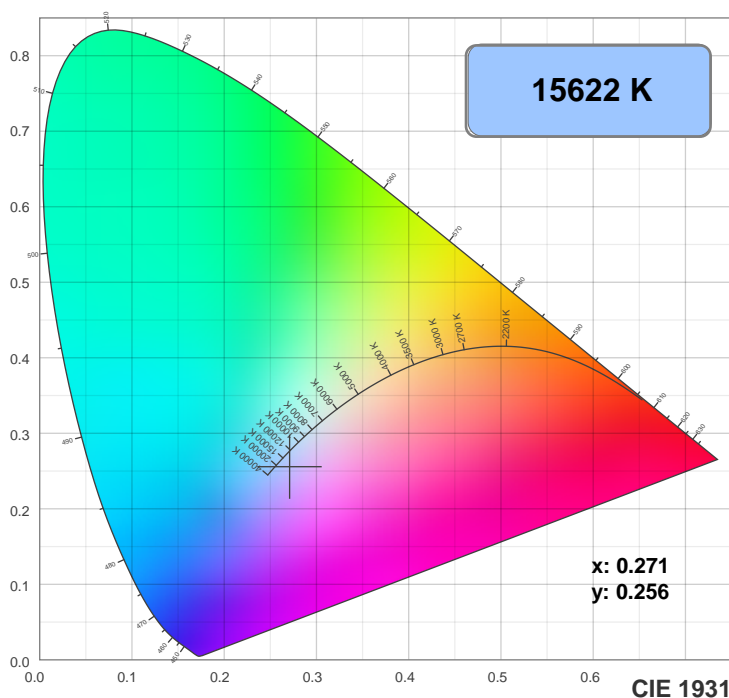
Beam Angle 50%	Field Angle 10%	Cutoff Angle 2.5%
17.9°	33.5°	48.9°

Spectra

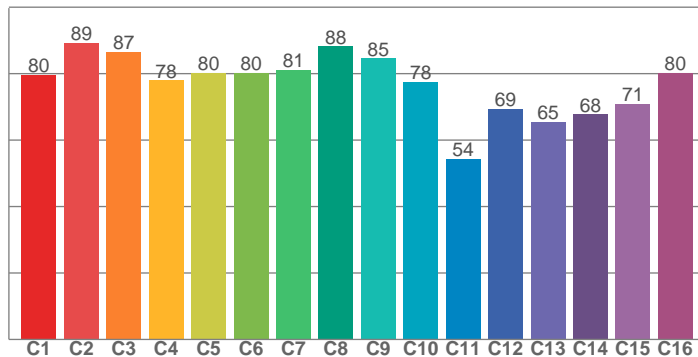
Dominant Wavelength: 461nm



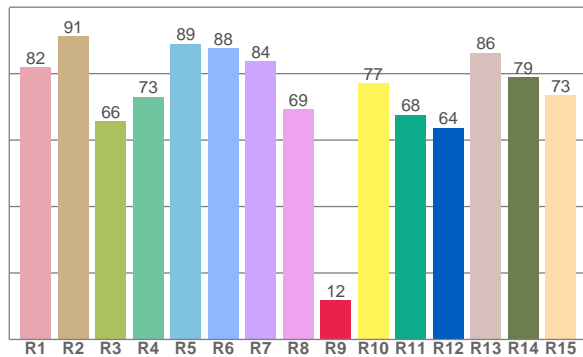
Color Details



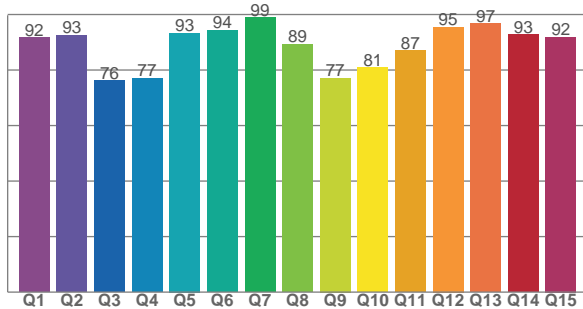
TM30: 78.5



CRI: 80.2 (R1-R8)



CQS: 86.8



CRI R values, only R1-R8 are used to calculate final CRI value

R1	R2	R3	R4	R5	R6	R7	R8	R9	R10	R11	R12	R13	R14	R15
81.9	91.3	65.7	73.0	89.0	87.6	83.7	69.2	11.8	77.1	67.6	63.7	86.3	79.0	73.5

TM30 C Values, 16 binned values out of total of 99 C values

C1	C2	C3	C4	C5	C6	C7	C8	C9	C10	C11	C12	C13	C14	C15	C16
79.6	89.3	86.6	78.0	80.3	80.3	81.2	88.3	84.6	77.5	54.4	69.3	65.5	67.7	71.0	80.2

CQS Q Values

Q1	Q2	Q3	Q4	Q5	Q6	Q7	Q8	Q9	Q10	Q11	Q12	Q13	Q14	Q15
91.6	92.6	76.1	77.1	93.3	94.4	98.9	89.3	77.1	80.9	86.9	95.5	96.8	92.8	91.9

Color Parameters

Color Temperature	Color Rendering Index	Red Component	Color Fidelity	Color Gamut	Color Quality Scale	Color Coordinate CIE 1931	Color Coordinate CIE 1931	Color Coordinate	Color Coordinate	Color Deviation from Black Body
CCT	CRI	CRI R9	TM30 Rf	TM30 Rg	CQS	x	y	u	v	Δuv
15622 K	80.2	11.8	78.5	110.4	86.8	0.271	0.256	0.196	0.278	-0.0145

TM30 Details

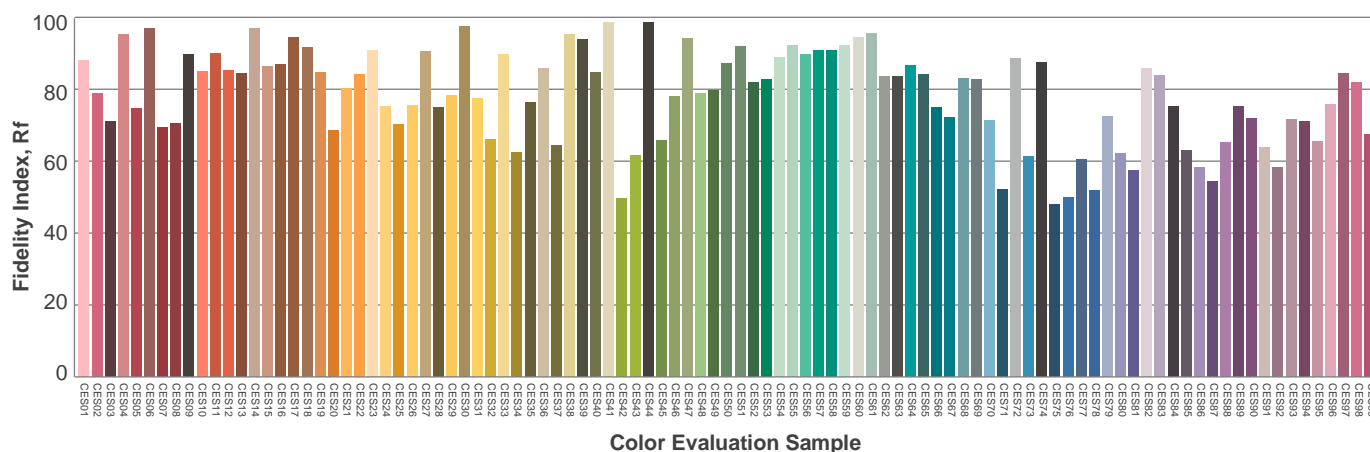
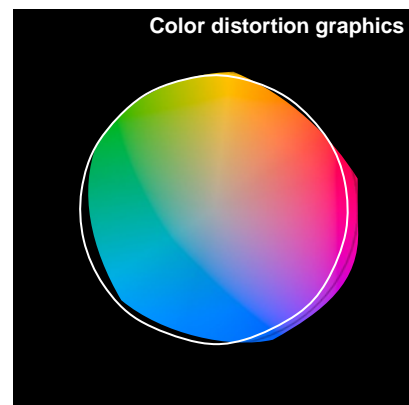
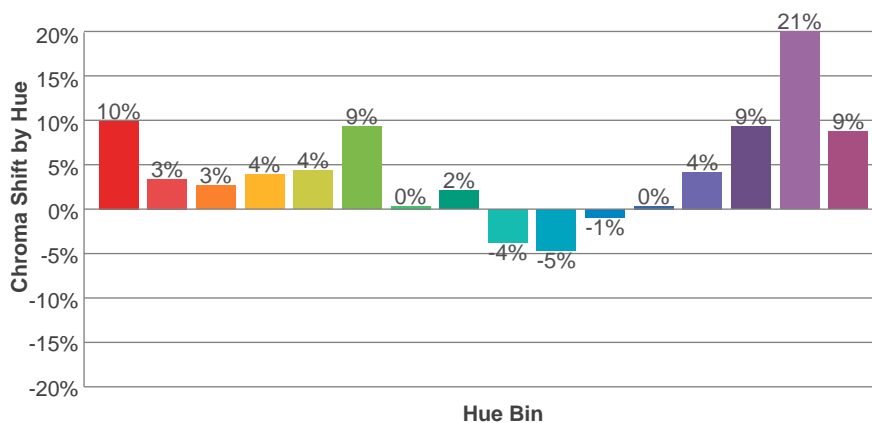
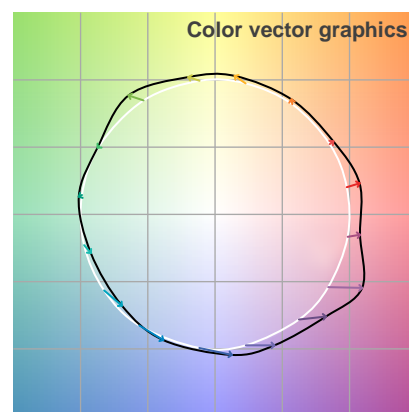
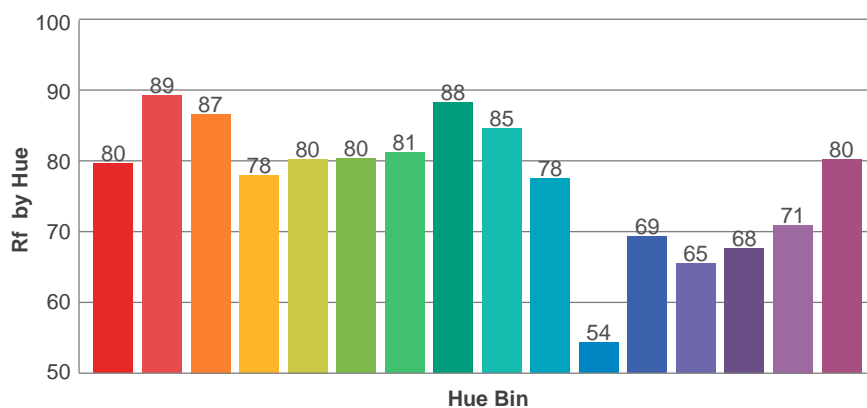
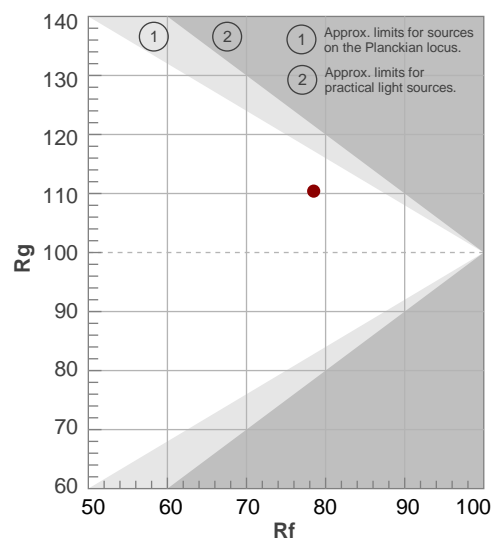
Rf 78.5

Fidelity Index Rf

Rg 110.4

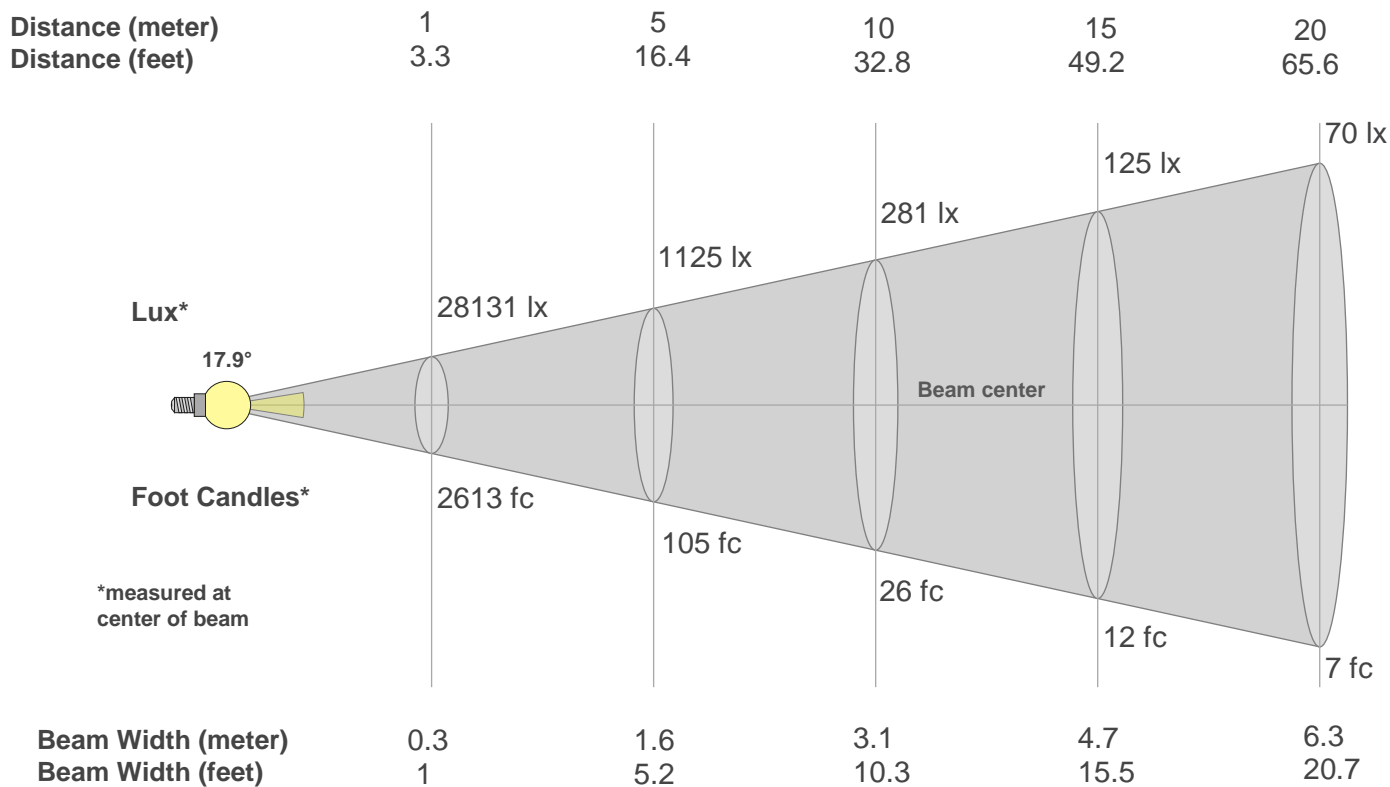
Gamut Index Rg

Hue Bin	R _f	Graphic shifts (%)	
		Chroma	Hue
1	80	10%	1%
2	89	3%	0%
3	87	3%	3%
4	78	4%	9%
5	80	4%	8%
6	80	9%	7%
7	81	0%	2%
8	88	2%	2%
9	85	-4%	7%
10	78	-5%	17%
11	54	-1%	21%
12	69	0%	25%
13	65	4%	21%
14	68	9%	18%
15	71	21%	14%
16	80	9%	3%



Color Evaluation Sample

Beam Details



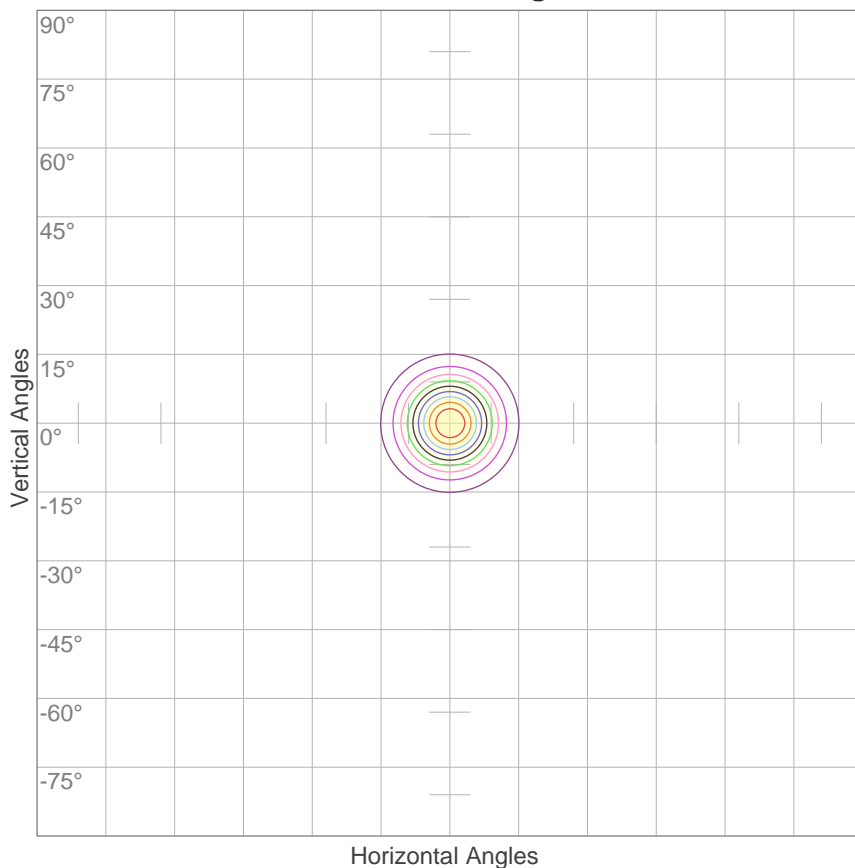
Beam Intensities from 1-20m

m	1	2	3	4	5	6	7	8	9	10	11	12	13	14	15	16	17	18	19	20
ft	3.3	6.6	9.8	13.1	16.4	19.7	23	26.2	29.5	32.8	36.1	39.4	42.7	45.9	49.2	52.5	55.8	59.1	62.3	65.6
lx	28131	7033	3126	1758	1125	781	574	440	347	281	232	195	166	144	125	110	97	87	78	70
fc	2613.4	653.4	290.4	163.3	104.5	72.6	53.3	40.8	32.3	26.1	21.6	18.1	15.5	13.3	11.6	10.2	9	8.1	7.2	6.5

Beam Angle 50%	Field Angle 10%	Cutoff Angle 2,5%	Intensity Ratio in 120° Cone	Intensity Ratio in 90° Cone
17.9°	33.5°	48.9°	99.9%	98.6%

ISO Diagrams

ISO Candela Diagram



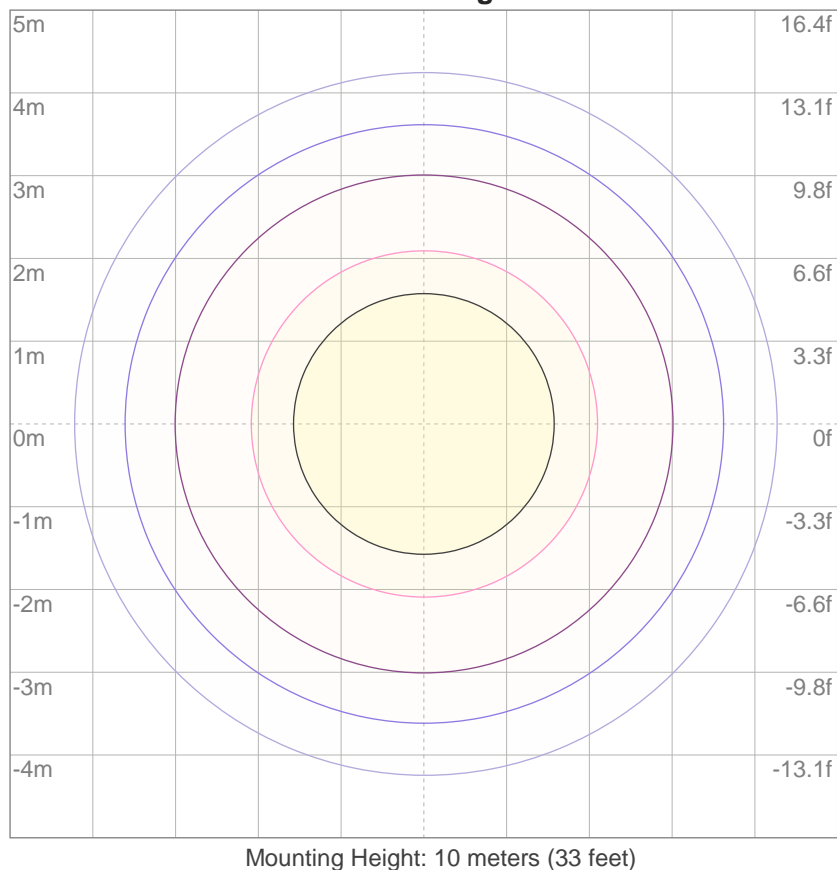
10%	2813 cd
20%	5626 cd
30%	8439 cd
40%	11252 cd
50%	14065 cd
60%	16878 cd
70%	19691 cd
80%	22504 cd
90%	25317 cd

Conditions:

Number of c-planes: 2

Candela at center: 28131 cd

ISO Lux Diagram



3%	8.44 lx
5%	14.1 lx
10%	28.1 lx
30%	84.4 lx
50%	141 lx

Conditions:

Number of c-planes: 2

Lux at center: 281 lx

*Lux distribution on a surface
when lamp is mounted at 10
meters from the surface.*