

Color Temperature:



Total Lumen Output:
7097 lm

Light Quality:

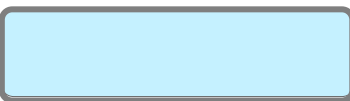


Peak:
33676 cd

Light Efficiency:



Power: 150 W



CIE 1931
x: 0.304
y: 0.316

Test: White

Date: 10/17/2018

Voltage: 115 V

Current: 1.40 A

Frequency: 60 Hz

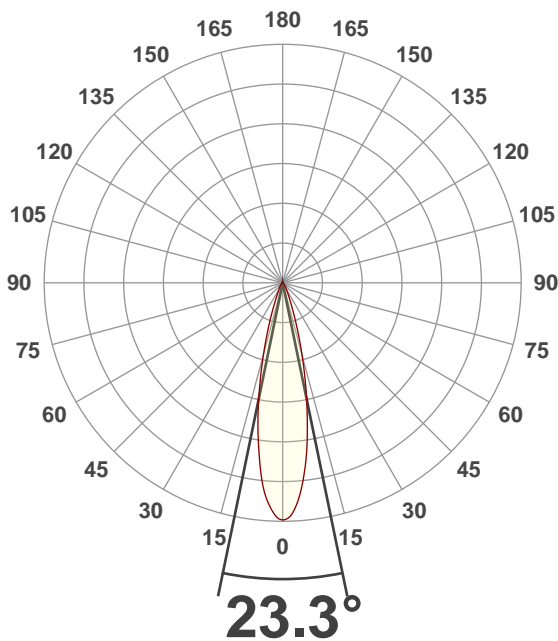
CRI: 71.2

CQS: 68.9

TM30: 67.3

Note:

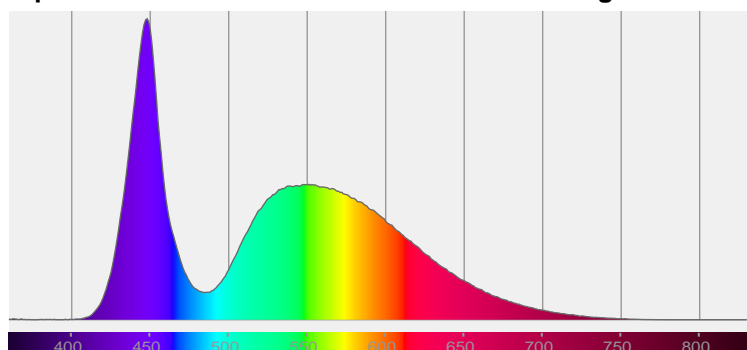
Beam Angle



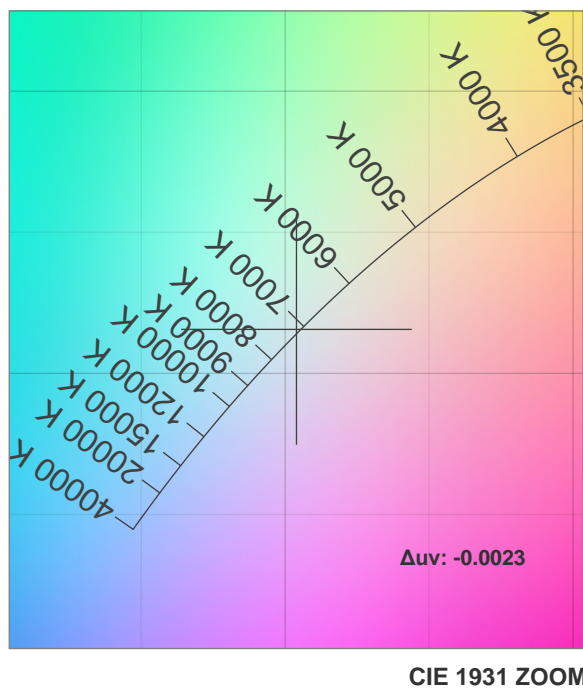
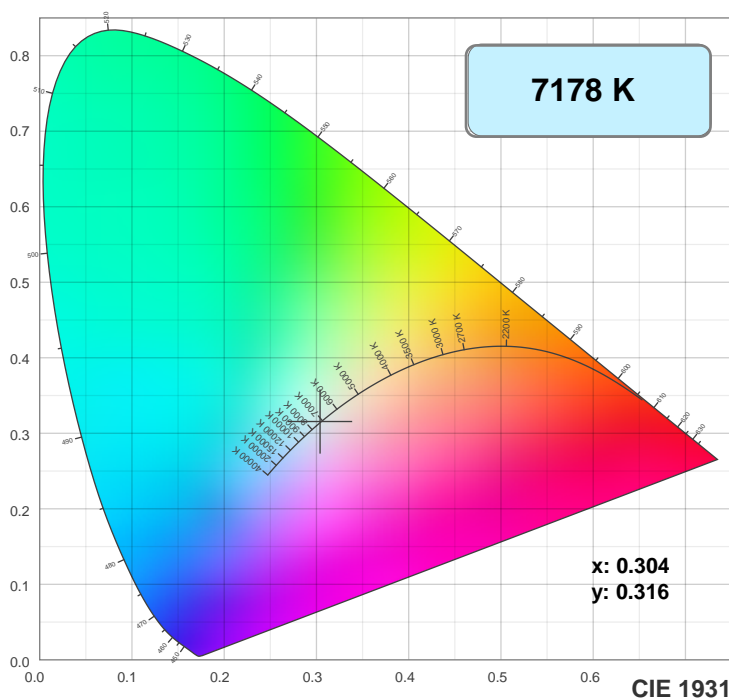
Beam Angle 50%	Field Angle 10%	Cutoff Angle 2.5%
23.3°	42.7°	64.5°

Spectra

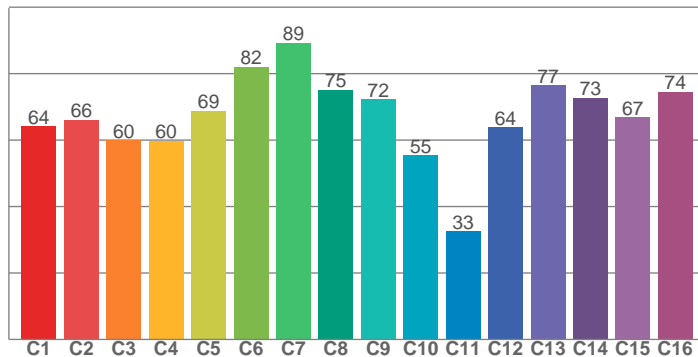
Dominant Wavelength: 468nm



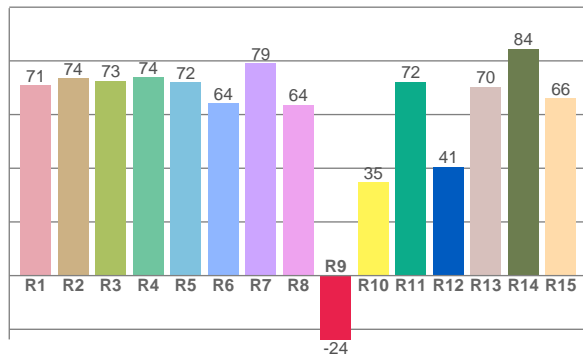
Color Details



TM30: 67.3



CRI: 71.2 (R1-R8)



CRI R values, only R1-R8 are used to calculate final CRI value

R1	R2	R3	R4	R5	R6	R7	R8	R9	R10	R11	R12	R13	R14	R15
70.8	73.5	72.6	73.9	71.9	64.2	79.2	63.7	-23.8	34.7	72.2	40.5	70.4	84.5	66.2

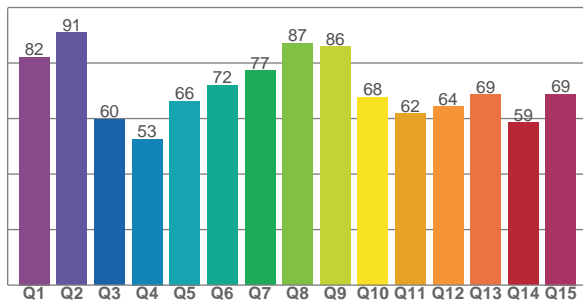
TM30 C Values, 16 binned values out of total of 99 C values

C1	C2	C3	C4	C5	C6	C7	C8	C9	C10	C11	C12	C13	C14	C15	C16
64.2	66.1	60.0	59.7	68.9	82.1	89.2	75.1	72.3	55.4	32.5	63.8	76.5	72.7	66.8	74.5

QQS Q Values

Q1	Q2	Q3	Q4	Q5	Q6	Q7	Q8	Q9	Q10	Q11	Q12	Q13	Q14	Q15
82.2	91.0	59.7	52.6	66.3	72.0	77.3	87.2	85.9	67.8	61.7	64.3	68.7	58.6	68.8

CQS: 68.9



Color Parameters

Color Temperature	Color Rendering Index	Red Component	Color Fidelity	Color Gamut	Color Quality Scale	Color Coordinate CIE 1931	Color Coordinate CIE 1931	Color Coordinate	Color Coordinate	Color Deviation from Black Body
CCT	CRI	CRI R9	TM30 Rf	TM30 Rg	CQS	x	y	u	v	Δuv
7178 K	71.2	-23.8	67.3	94.5	68.9	0.304	0.316	0.197	0.306	-0.0023

TM30 Details

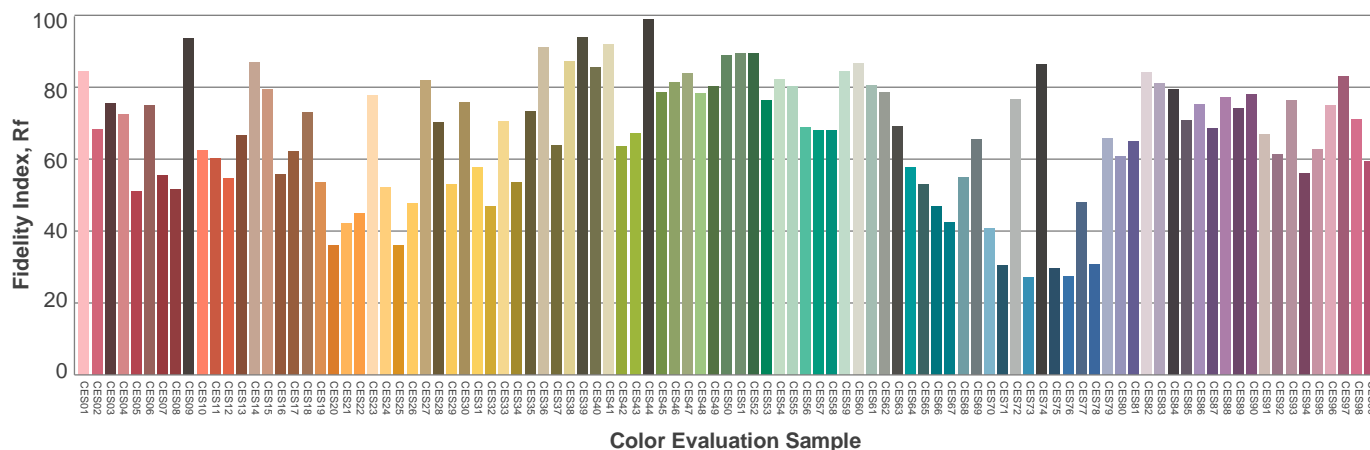
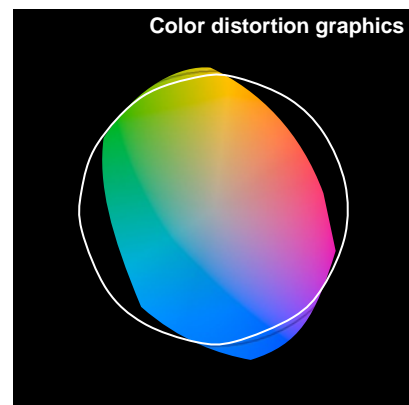
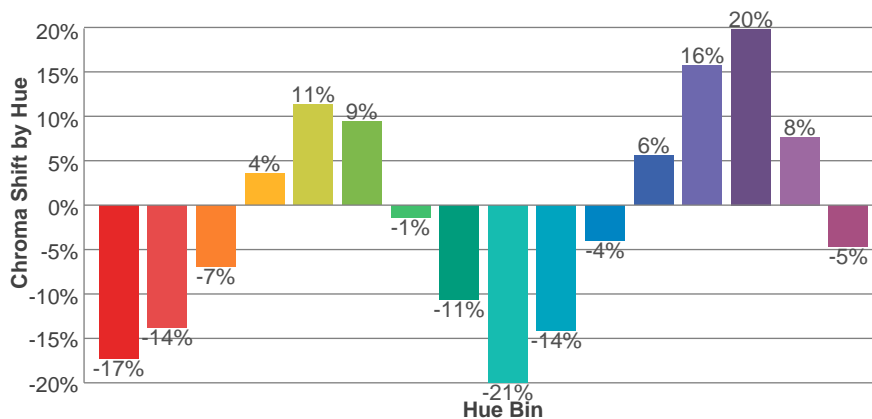
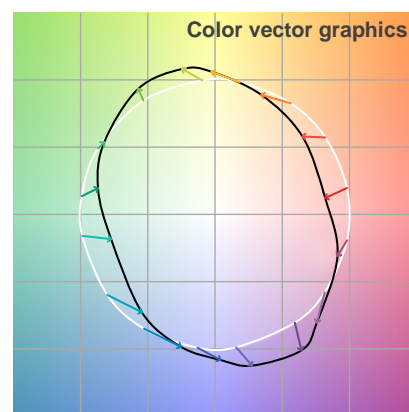
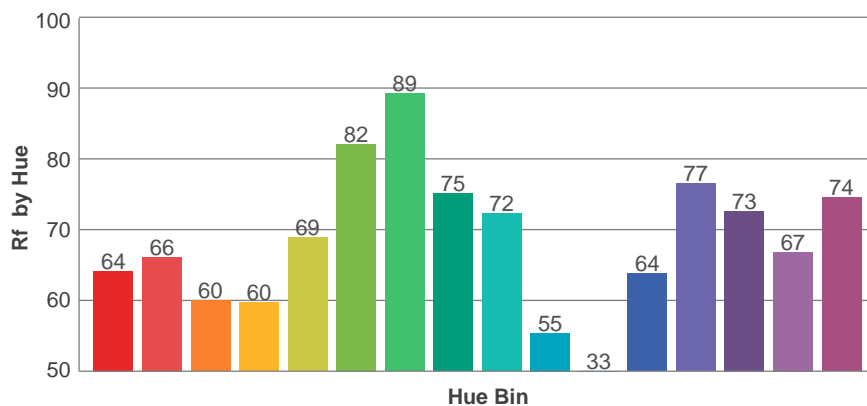
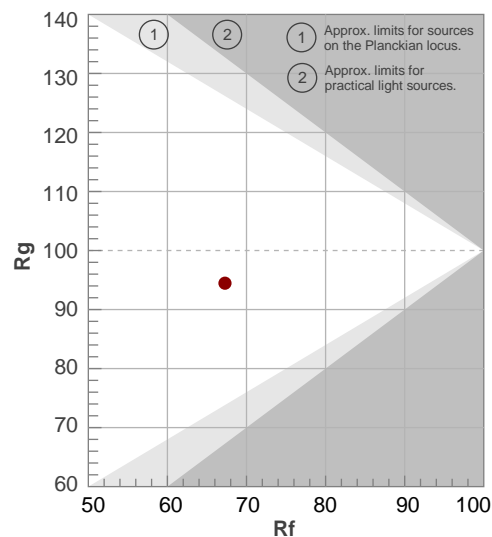
Rf 67.3

Fidelity Index Rf

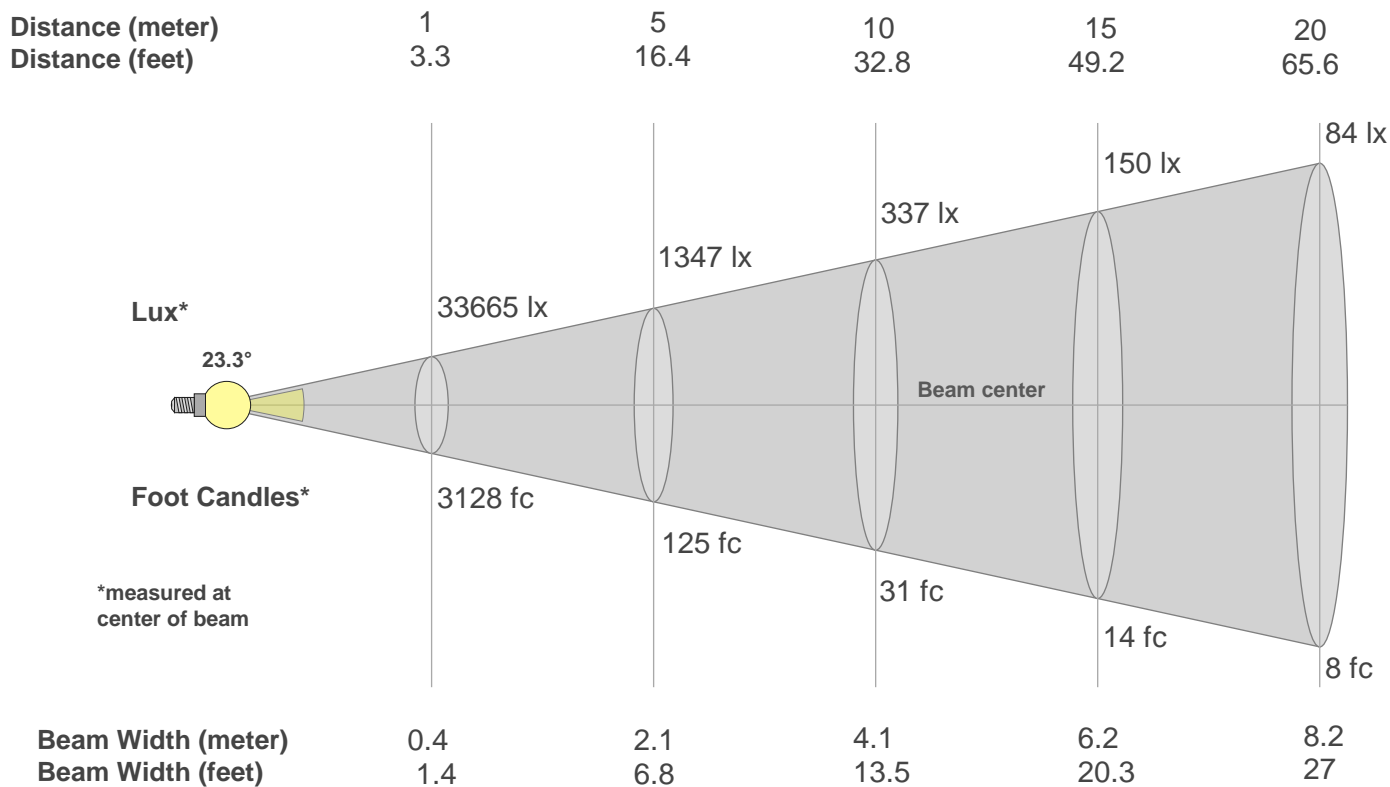
Rg 94.5

Gamut Index Rg

Hue Bin	R _f	Graphic shifts (%)	
		Chroma	Hue
1	64	-17%	-4%
2	66	-14%	10%
3	60	-7%	22%
4	60	4%	22%
5	69	11%	13%
6	82	9%	-2%
7	89	-1%	-6%
8	75	-11%	-8%
9	72	-21%	7%
10	55	-14%	25%
11	33	-4%	30%
12	64	6%	18%
13	77	16%	9%
14	73	20%	-7%
15	67	8%	-22%
16	74	-5%	-13%



Beam Details



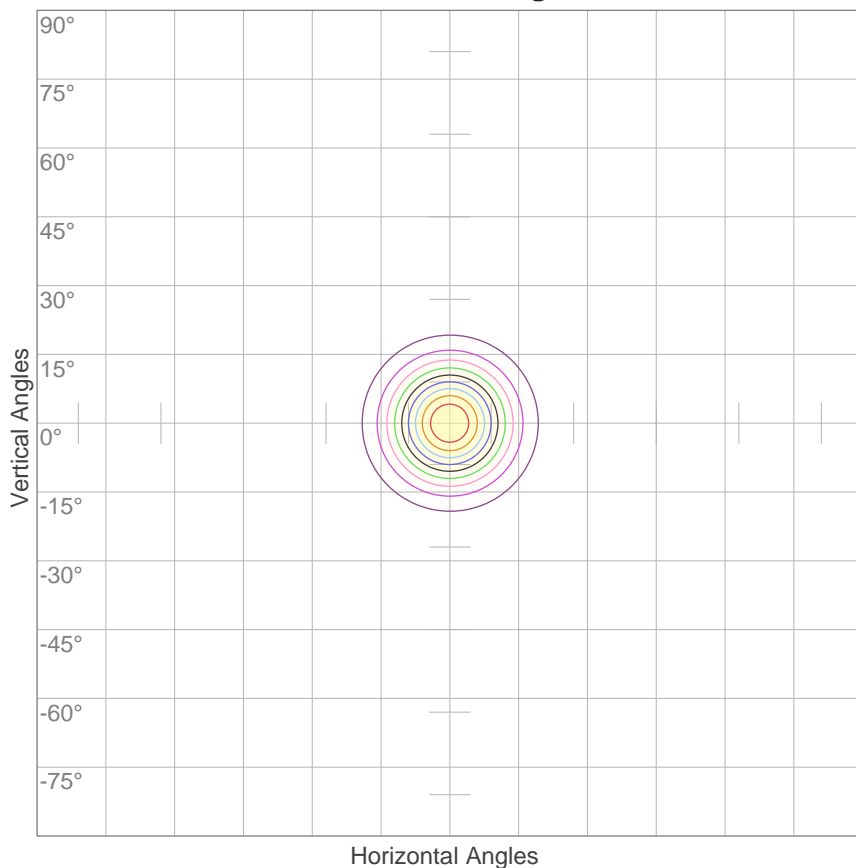
Beam Intensities from 1-20m

m	1	2	3	4	5	6	7	8	9	10	11	12	13	14	15	16	17	18	19	20
ft	3.3	6.6	9.8	13.1	16.4	19.7	23	26.2	29.5	32.8	36.1	39.4	42.7	45.9	49.2	52.5	55.8	59.1	62.3	65.6
lx	33665	8416	3741	2104	1347	935	687	526	416	337	278	234	199	172	150	132	116	104	93	84
fc	3127.5	781.9	347.5	195.5	125.1	86.9	63.8	48.9	38.6	31.3	25.8	21.7	18.5	16	13.9	12.2	10.8	9.7	8.7	7.8

Beam Angle 50%	Field Angle 10%	Cutoff Angle 2,5%	Intensity Ratio in 120° Cone	Intensity Ratio in 90° Cone
23.3°	42.7°	64.5°	99.9%	97.7%

ISO Diagrams

ISO Candela Diagram



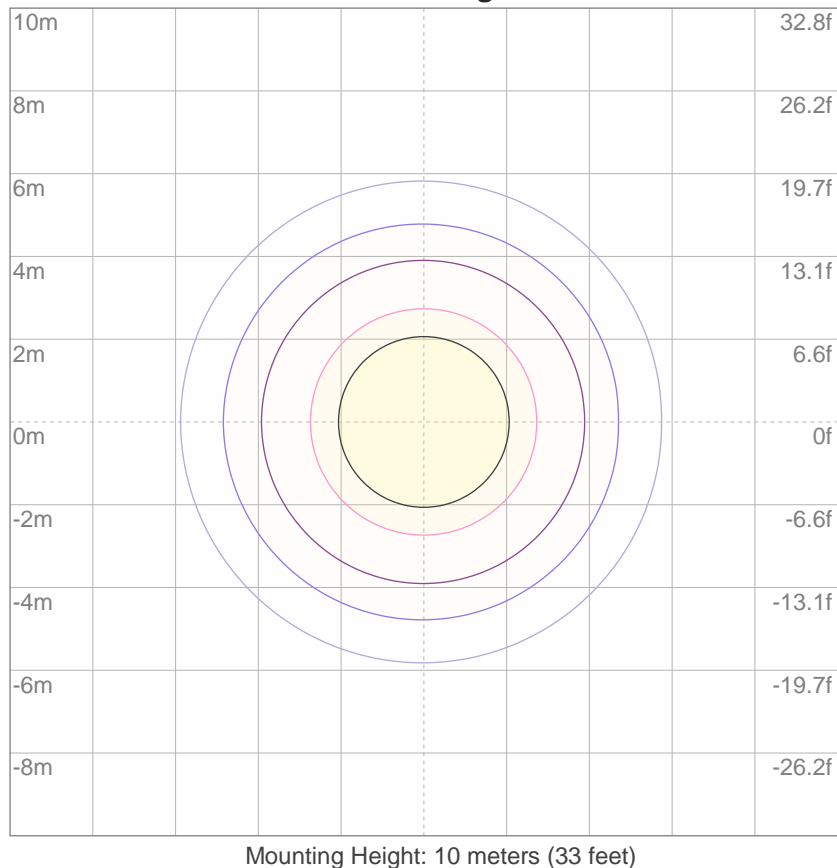
10%	3366 cd
20%	6733 cd
30%	10099 cd
40%	13466 cd
50%	16832 cd
60%	20199 cd
70%	23565 cd
80%	26932 cd
90%	30298 cd

Conditions:

Number of c-planes: 2

Candela at center: 33665 cd

ISO Lux Diagram



3%	10.1 lx
5%	16.8 lx
10%	33.7 lx
30%	101 lx
50%	168 lx

Conditions:

Number of c-planes: 2

Lux at center: 337 lx

Lux distribution on a surface when lamp is mounted at 10 meters from the surface.