

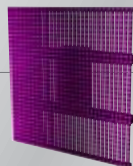


Enrique Iglesias Tour
Lighting Designer: Travis Shirley

EVLED

EVLED MEDIA SCREEN SERIES

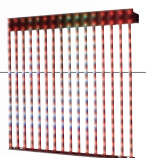
EVLED 1024 SMD
TRI R / G / B

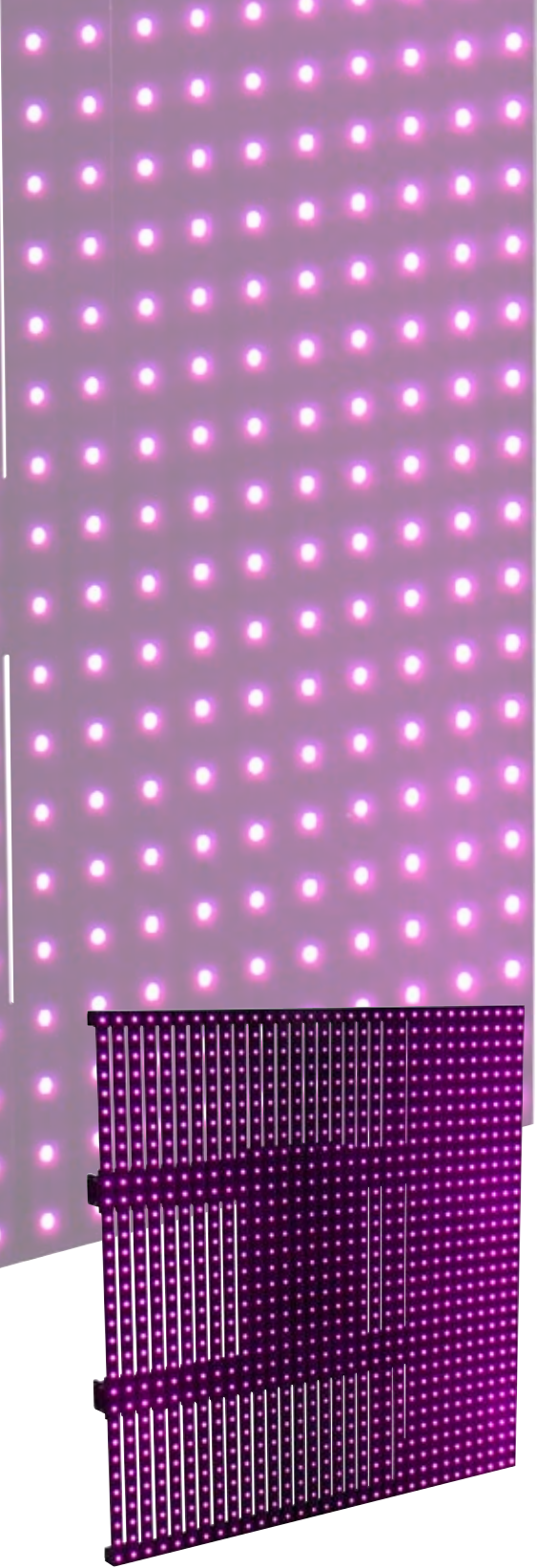


EVLED 1024
R / G / B



EVLED 256
R / G / B





EVLED 1024 SMD

TRI R / G / B

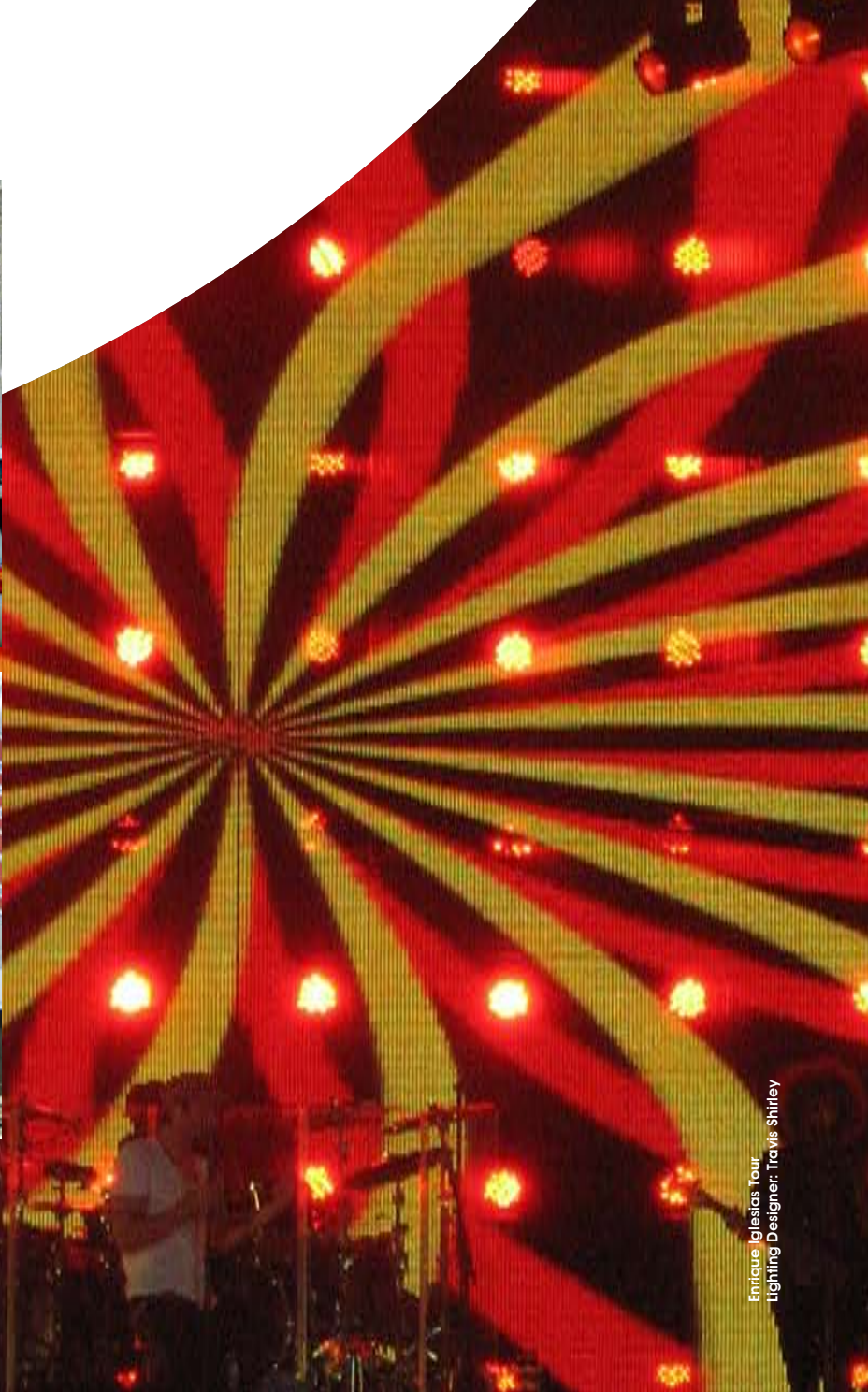
Model	EVLED-1024SMD
Transparency:	55%
Curtain Composition	Al-alloy frame, rubber compound dealing with seams for weatherproof
Tile Size	25.2 X 25.2 X 2.95 in/tile 640 X 640 X 75 mm/tile
Tile Weight	14.55 lbs/tile 6.6 kg/tile
Tile Area	0.4096m ² /tile
Pixel Pitch	20 mm
Luminosity	4000 nits
Color Temperature	6500 k
Visual Angle	150 / 150° (50% brightness)
Visual Range	160 / 160°
Pixel Configuration	1R 1G 1B (3-in-1 SMD)
Tile Resolution	32 x 32 pixels/tile
Pixel Resolution	2500 pixels/m ²
LED Quantity	2500 LEDs/m ² (3-in-1)
Color Number	14 Trillion
Processing Depth	14 bits
Contrast Ratio	2,000:1
Life Span	100,000 hours - LED; 50,000-70,000 hour - floor body
Frame Rate	60Hz
Data Refresh Rate	800Hz
Display Mode	synchronous with video source
LED Failure Rate	1/10000
MTBF	>10000 hours
Drive Mode	Static, Constant Current Drive
Power Supply	AC 100-240V, 50Hz or 60Hz
Working Voltage	DC 5V
Power Consumption	380 w/m ² (max); 220 w/m ² (average)
Ingress Protection	IP65
Ambient Temperature	- 20 to +50 Celsius degree
Relative Humidity	10% to 99%



EVLED 1024 SMD

Ideal for both outdoor and indoor video display, the EVLED 1024 SMD Strip Video Screens are bright, light weight, plug and play modules using TriColor SMD RGB LED's capable of outputting up to 14 Trillion colors. With a 20mm pitch it is easy to handle, super-thin, semi-transparent design makes it ideal for small or large applications. Integrated rigging fly support hardware And easy of set up make this system ideal for a variety of portable or permanent applications.

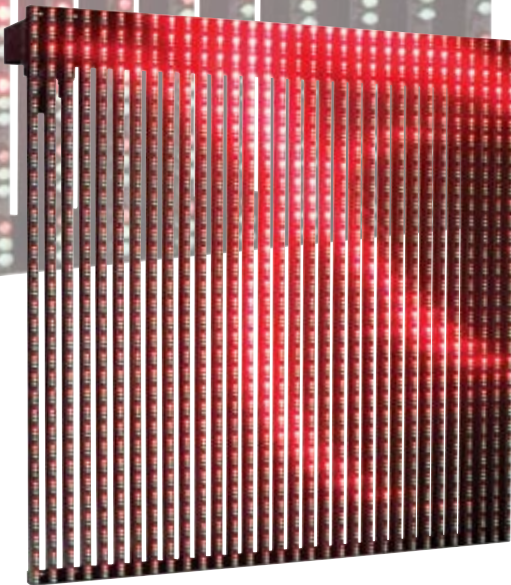
Rig Bar & Snap Lock Hanging System



EVLED 1024

R / G / B

Model	EVLED-1024
Transparency:	35%
Curtain Composition	Al-alloy frame, rubber compound dealing with seams for weatherproof
Tile Size	23.62 X 23.62 X 2.95 in/tile 600 X 600 X 75 mm/tile
Tile Weight	16.5 lbs/tile 7.5 kg/tile
Tile Area	0.36m ² /tile
Pixel Pitch	18.75 mm
Luminosity	5500 nits
Color Temperature	6500 k
Visual Angle	110 / 50° (50% brightness)
Visual Range	160 / 80°
Pixel Configuration	1R 1G 1B (DIP)
Tile Resolution	32 x 32 pixels/tile
Pixel Resolution	2844 pixels/m ²
LED Quantity	8532 LEDs/m ²
Color Number	14 Trillion
Processing Depth	14 bits
Contrast Ratio	1,600:1
Life Span	100,000 hours - LED; 50,000-50,000 hour - floor body
Frame Rate	60Hz
Data Refresh Rate	800Hz
Display Mode	Synchronous with video source
LED Failure Rate	1/10000
MTBF	> 10000 hours
Drive Mode	Static, Constant Current Drive
Power Supply	AC 100-240V, 50Hz or 60Hz
Working Voltage	DC 5V
Power Consumption	560 w/m ² (max); 350 w/m ² (average)
Ingress Protection	IP65
Ambient Temperature	- 20 to +50 Celsius degree
Relative Humidity	10% to 99%



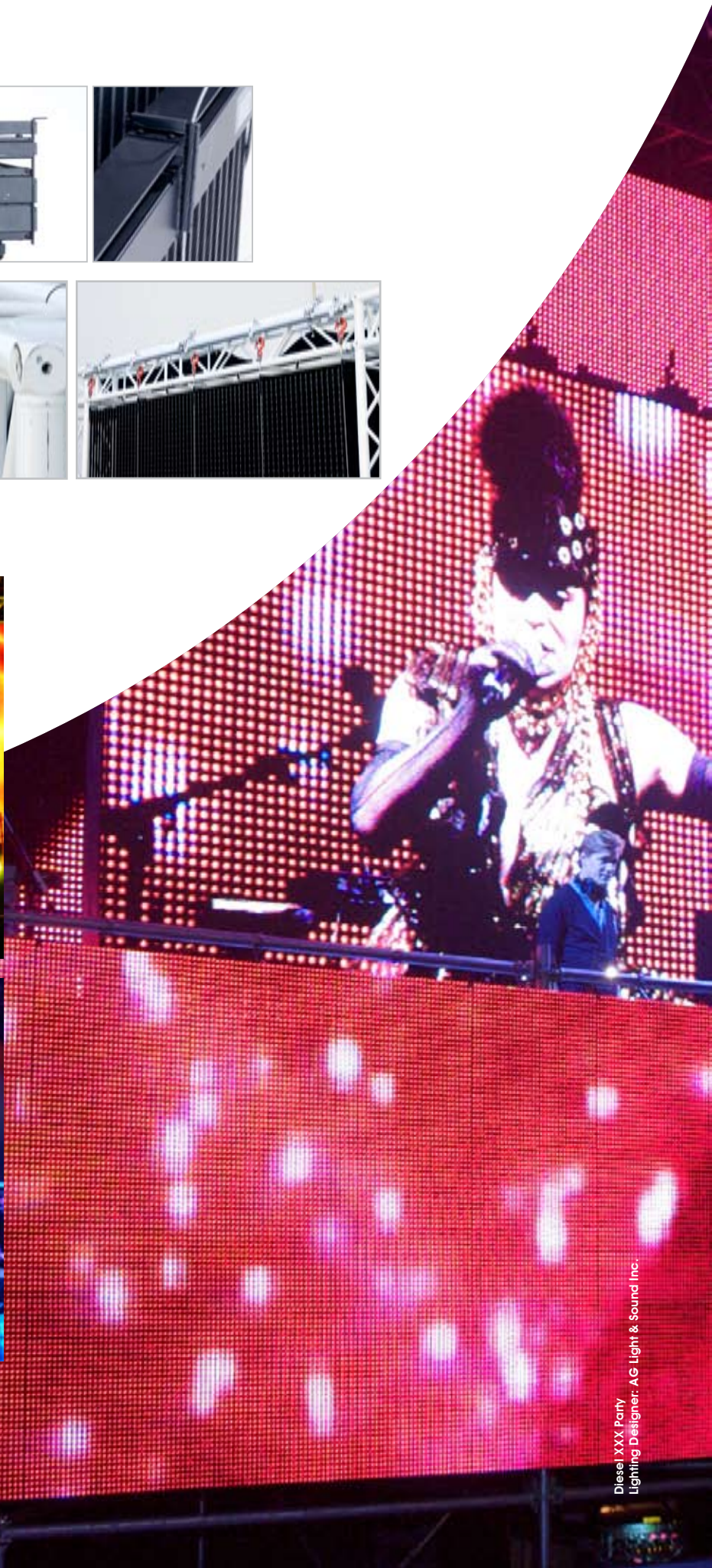
EVLED 1024

Ideal for both outdoor and indoor video display, the EVLED Strip Video Screens are bright, light weight, plug and play modules using RGB LED's capable of outputting up to 16.7 million colors. It is easy to handle, super-thin, Semi-transparent design makes it ideal for small or large applications. Integrated rigging fly support hardware and easy of set up make this system ideal for a variety of portable or permanent applications. Comes available in 37.5mm and 18mm pitch.

Simple Connection System



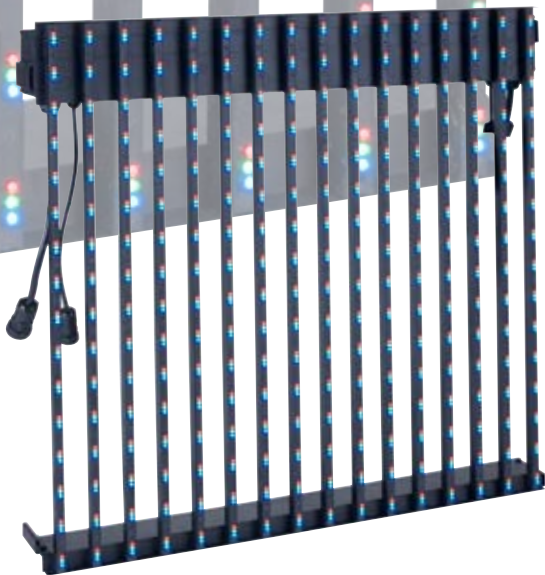
Truss Hanging System



EVLED 256

R / G / B

Model	EVLED-256
Transparency:	55%
Curtain Composition	Al-alloy frame, rubber compound dealing with seams for weatherproof
Tile Size	23.62 X 23.62 X 2.95 in/tile 600 X 600 X 75 mm/tile
Tile Weight	9.92 lbs/tile 4.5 kg/tile
Tile Area	0.36m ² /tile
Pixel Pitch	37.5 mm
Luminosity	2000 nits
Color Temperature	6500 k
Visual Angle	110 / 50 (50% brightness)
Visual Range	160/120°
Pixel Configuration	1R 1G 1B (DIP)
Tile Resolution	16 x 16 pixels/tile
Pixel Resolution	711 pixels/m ²
LED Quantity	2133 LEDs/m ²
Color Number	14 Trillion
Processing Depth	14 bits
Contrast Ratio	2000:1
Life Span	100,000 hours - LED; 50,000-70,000 hour - floor body
Frame Rate	60Hz
Data Refresh Rate	Rate 800Hz
Display Mode	Synchronous with video source
LED Failure Rate	1/10000
MTBF	>10000 hours
Drive Mode	Static, Constant Current Drive
Power Supply	AC 100-240V, 50Hz or 60Hz
Working Voltage	DC 5V
Power Consumption	250 w/m ² (max); 150 w/m ² (average)
Ingress Protection	IP65
Ambient Temperature	- 20 to +50 Celsius degree
Relative Humidity	10% to 99%



EVLED 256

Ideal for both outdoor and indoor video display, the EVLED Strip Video Screens are bright, light weight, plug and Play modules using RGB LED's capable of outputting up to 16.7 million colors. It is easy to handle, super-thin, Semi-transparent design makes it ideal for small or large applications. Integrated rigging fly support hardware and easy of set up make this system ideal for a variety of portable or permanent applications. Comes available in 37.5mm and 18mm pitch.

Simple Connection System



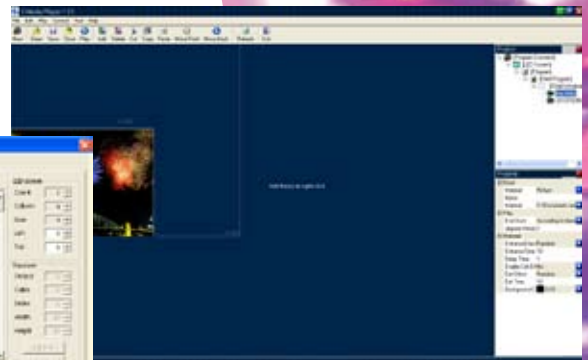
Truss Hanging System





EVLED VSC MEDIA PROCESSOR

Model	EVLED-VSC
Composition	Powder-coated steel
Unit Size	423 X 330 X 46 mm (LxWxH)
Unit Weight	5.3 kg
Dot Correction	Single, 2x2, 4x4 and 8x8, Max. 6144 pixels, 256 adjustable RGB levels
Max Resolution	1280 x 1024 pixels
Grey Level	0 - 66536 levels
High Frequency Refresh Rate	Selectable between 100Hz - 3,000Hz
Mounting	Free standing on rubber feet or rack mounted with rack ears
Front Panel Controls	Power switch and Up/Down buttons to control 16 preset intensity levels
Rear Panel Connections	AC Input, LAN Output, RS232 Port and DVI Input
Command Communication	Rs232
Signal Input	DVI
Signal Output	LAN, CAT5



EVLED 256

The EVLED VSC full-color synchronous video control system is composed of a rack mount 19" Video controller and special configuration Playback media software. Control is via standard PC windows operating system with DVI output card into DVI display card input on the Video controller and then transmitted to the scan controller through ether-net cable. The Video controller has two signal output ports. Each port can connect a set of LED video displays. A standard Ethernet cable transmits 1280 X 1024 pixels within max distance of 100m. The VSC software included allows configuration, sizing, mapping and media playback.



For more info -
Call 888.245.6726 / Visit www.ElationLighting.com