

Color Temperature:



Total Lumen Output:
9809 lm

Light Quality:

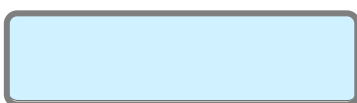


Peak:
966528 cd

Light Efficiency:



Power: 422 W



CIE 1931
x: 0.308
y: 0.316

Test: Beam Zoom Out

Date: 7/27/2018

Voltage: 116 V

Current: 3.64 A

Frequency: 60 Hz

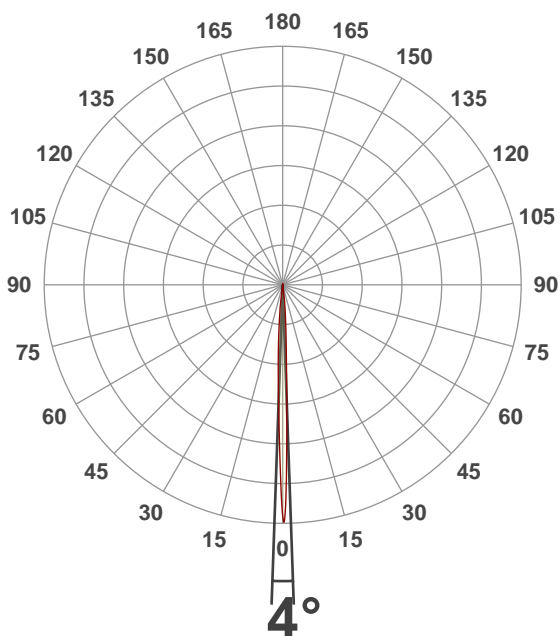
CRI: 75.9

CQS: 71.2

TM30: 75.2

Note:

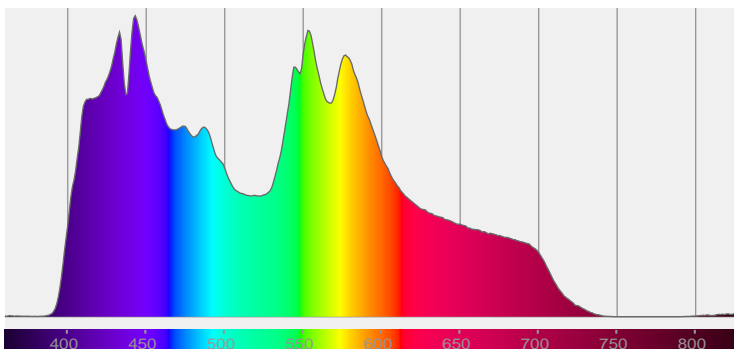
Beam Angle



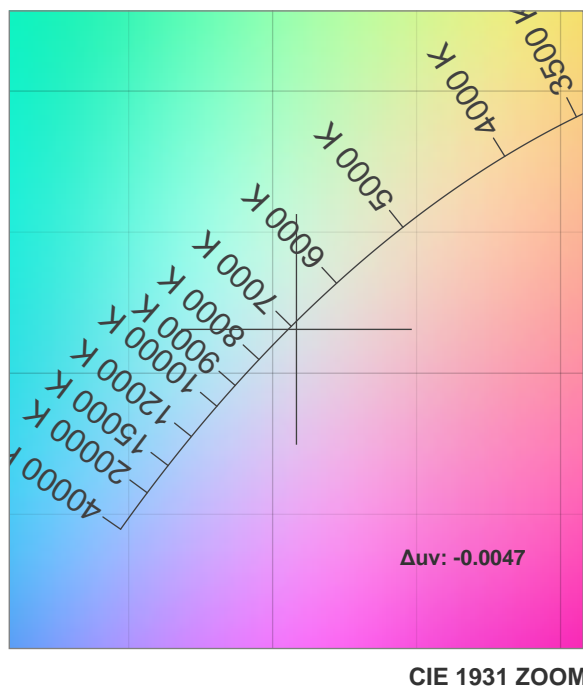
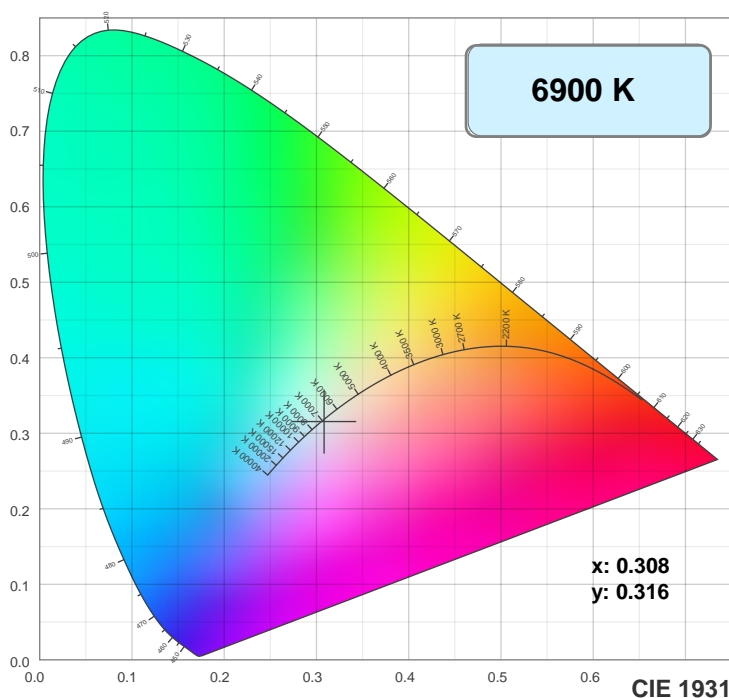
Beam Angle 50%	Field Angle 10%	Cutoff Angle 2.5%
4°	11.9°	14°

Spectra

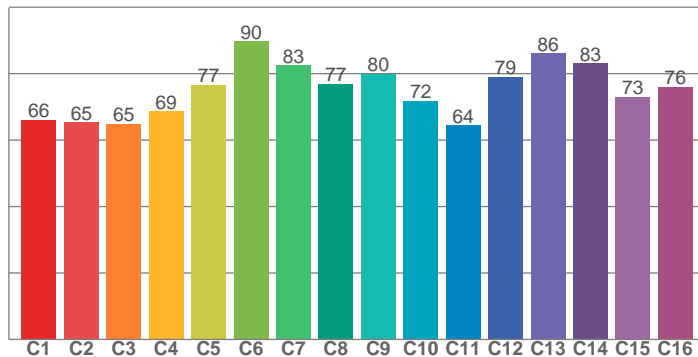
Dominant Wavelength: 360nm



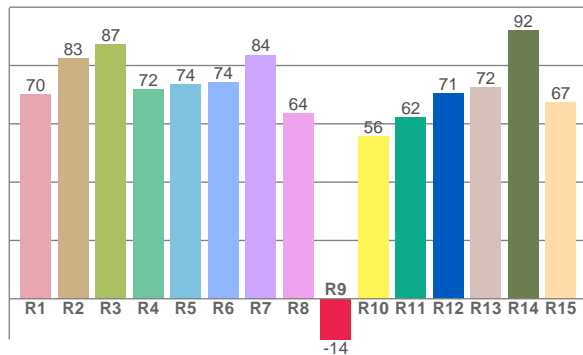
Color Details



TM30: 75.2



CRI: 75.9 (R1-R8)



CRI R values, only R1-R8 are used to calculate final CRI value

R1	R2	R3	R4	R5	R6	R7	R8	R9	R10	R11	R12	R13	R14	R15
70.1	82.5	87.1	71.8	73.7	74.4	83.6	63.7	-13.9	55.8	62.1	70.6	72.5	92.1	67.5

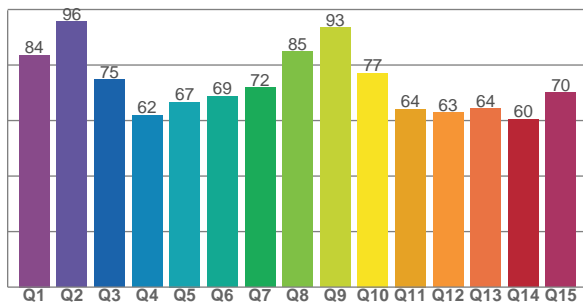
TM30 C Values, 16 binned values out of total of 99 C values

C1	C2	C3	C4	C5	C6	C7	C8	C9	C10	C11	C12	C13	C14	C15	C16
66.1	65.4	64.9	68.6	76.6	89.8	82.5	76.9	79.9	71.8	64.5	79.1	86.1	83.0	73.0	76.1

CQS Q Values

Q1	Q2	Q3	Q4	Q5	Q6	Q7	Q8	Q9	Q10	Q11	Q12	Q13	Q14	Q15
83.6	95.7	74.7	61.9	66.7	68.8	71.9	84.8	93.4	77.2	64.2	62.8	64.4	60.5	70.1

CQS: 71.2



Color Parameters

Color Temperature	Color Rendering Index	Red Component	Color Fidelity	Color Gamut	Color Quality Scale	Color Coordinate CIE 1931	Color Coordinate CIE 1931	Color Coordinate	Color Coordinate	Color Deviation from Black Body
CCT	CRI	CRI R9	TM30 Rf	TM30 Rg	CQS	x	y	u	v	Δuv
6900 K	75.9	-13.9	75.2	91.5	71.2	0.308	0.316	0.200	0.307	-0.0047

TM30 Details

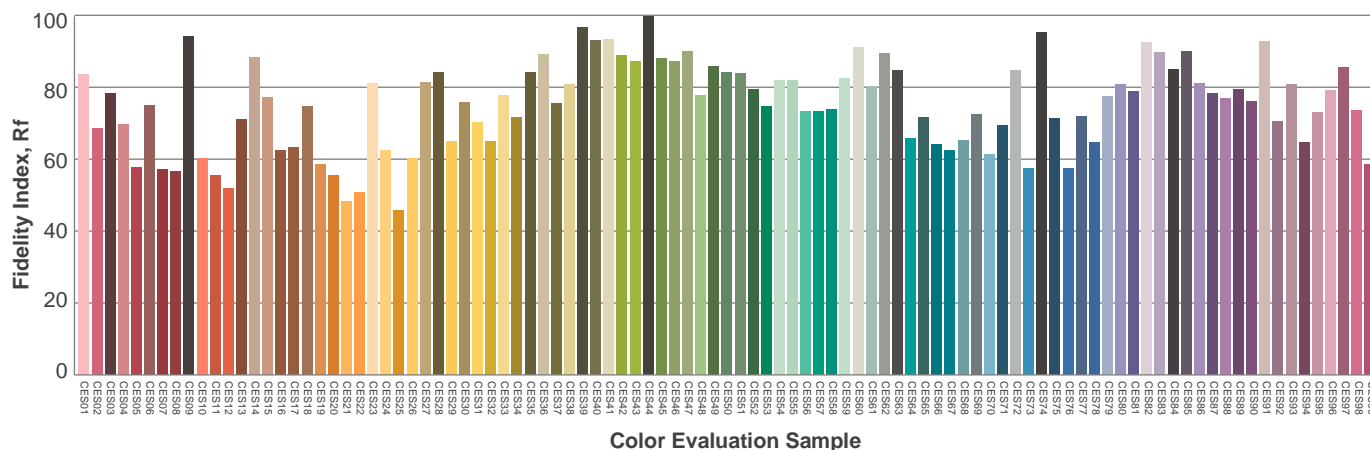
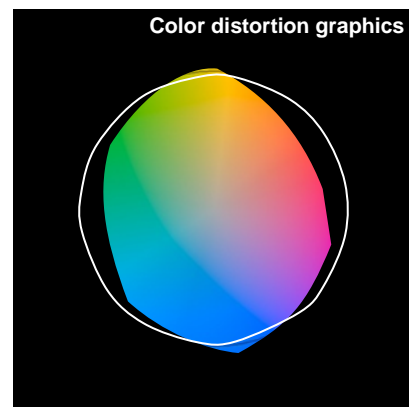
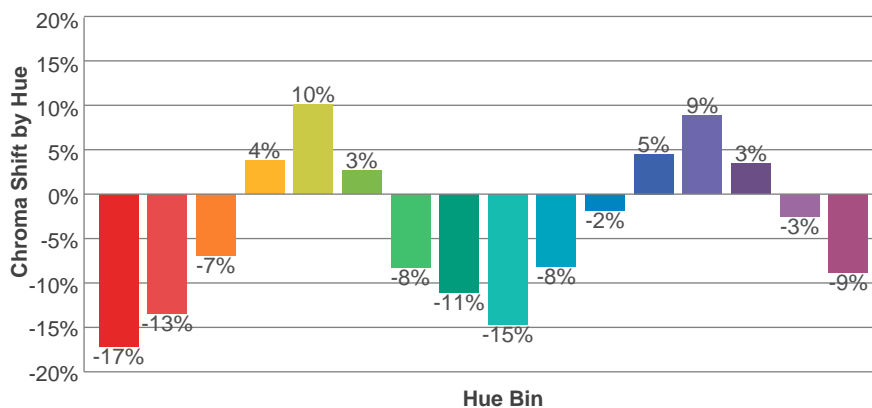
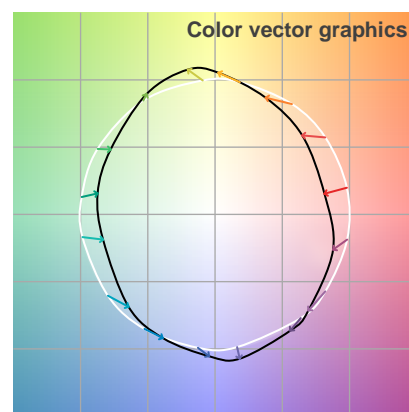
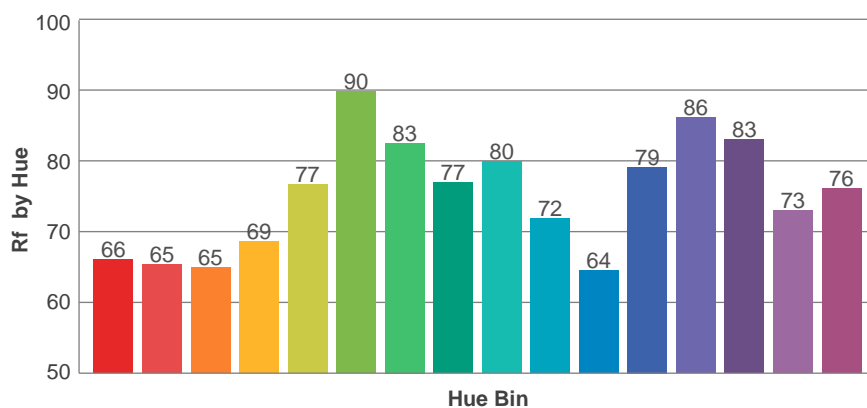
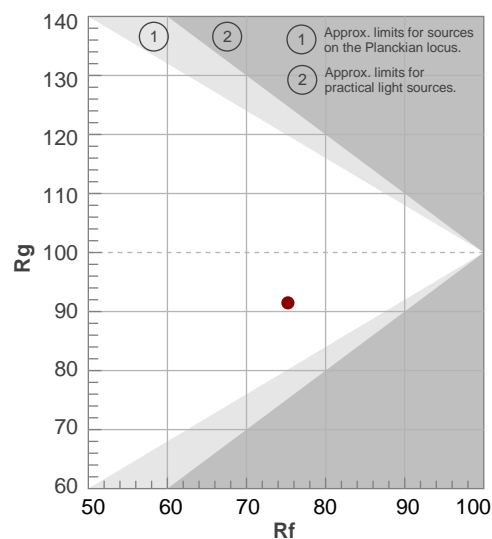
Rf 75.2

Fidelity Index Rf

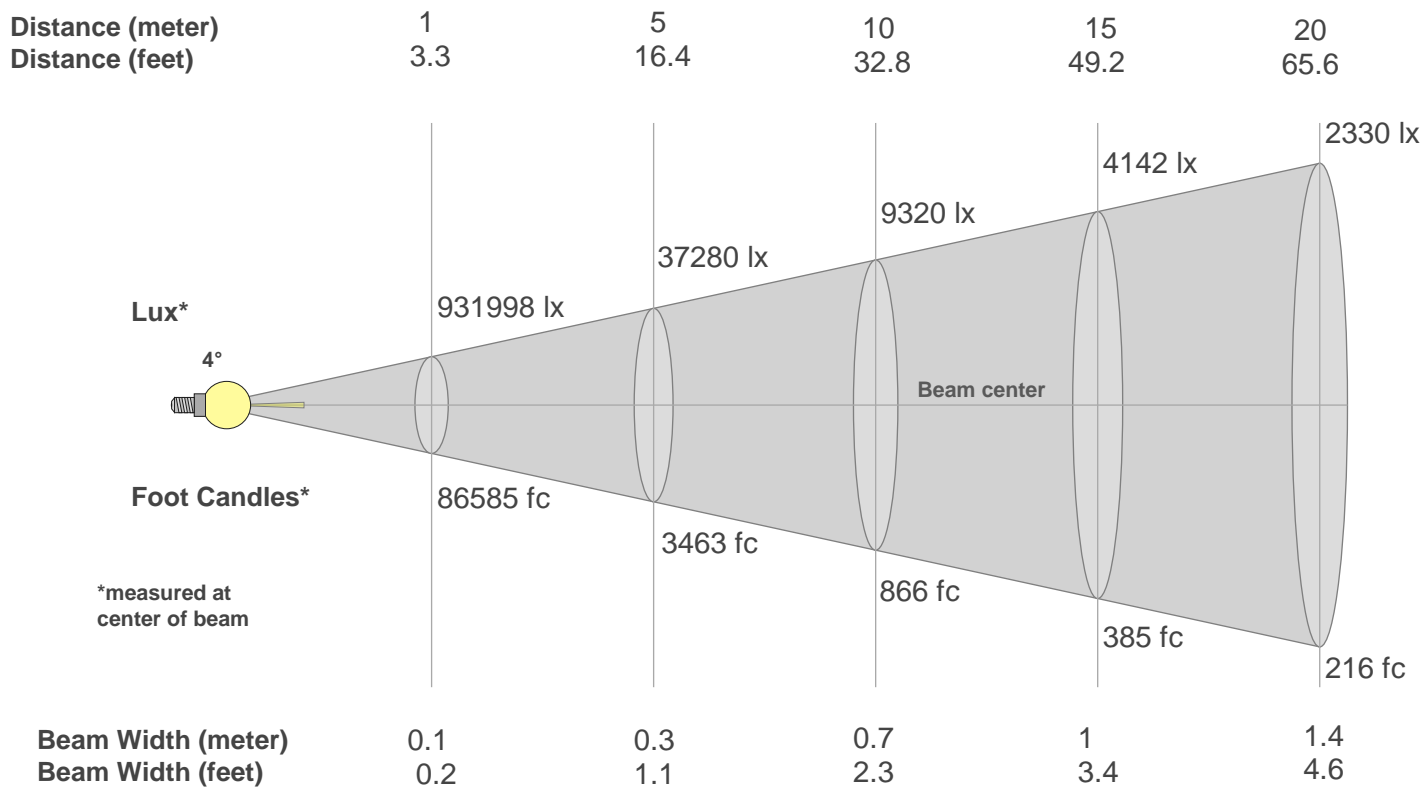
Rg 91.5

Gamut Index Rg

Hue Bin	R _f	Graphic shifts (%)	
		Chroma	Hue
1	66	-17%	-1%
2	65	-13%	11%
3	65	-7%	19%
4	69	4%	17%
5	77	10%	9%
6	90	3%	-5%
7	83	-8%	-5%
8	77	-11%	-5%
9	80	-15%	5%
10	72	-8%	15%
11	64	-2%	15%
12	79	5%	9%
13	86	9%	0%
14	83	3%	-12%
15	73	-3%	-19%
16	76	-9%	-9%



Beam Details



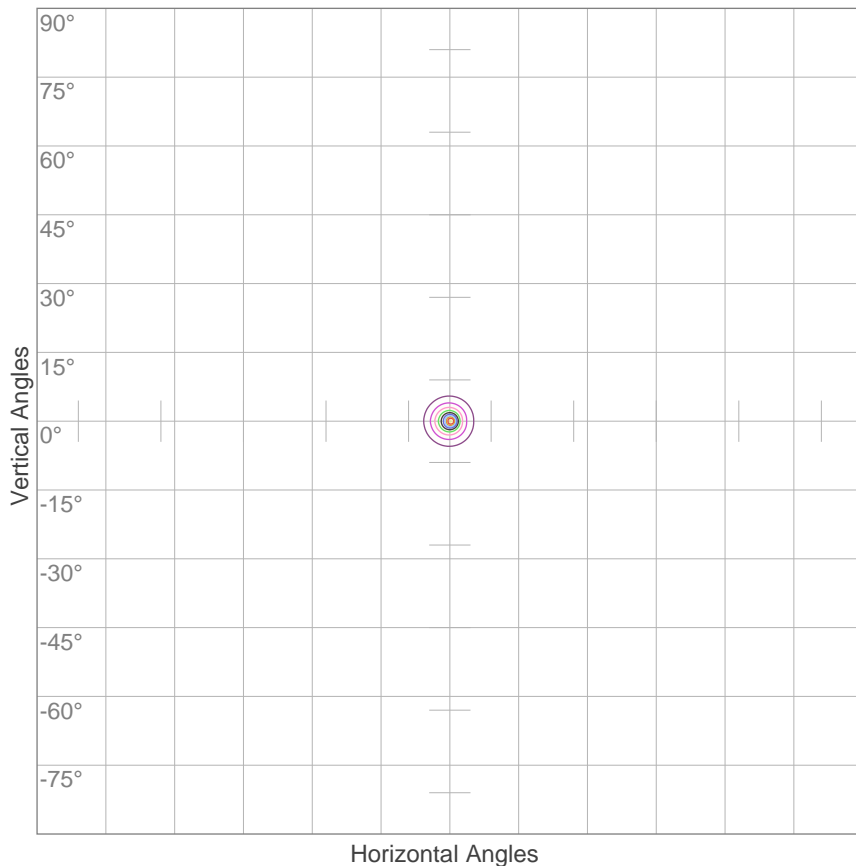
Beam Intensities from 1-20m

m	1	2	3	4	5	6	7	8	9	10	11	12	13	14	15	16	17	18	19	20
ft	3.3	6.6	9.8	13.1	16.4	19.7	23	26.2	29.5	32.8	36.1	39.4	42.7	45.9	49.2	52.5	55.8	59.1	62.3	65.6
lx	931998	233000	103555	58250	37280	25889	19020	14562	11506	9320	7702	6472	5515	4755	4142	3641	3225	2877	2582	2330
fc	86585.5	21646.4	9620.6	5411.6	3463.4	2405.2	1767.1	1352.9	1069	865.9	715.6	601.3	512.3	441.8	384.8	338.2	299.6	267.2	239.8	216.5

Beam Angle 50%	Field Angle 10%	Cutoff Angle 2,5%	Intensity Ratio in 120° Cone	Intensity Ratio in 90° Cone
4°	11.9°	14°	100.0%	100.0%

ISO Diagrams

ISO Candela Diagram



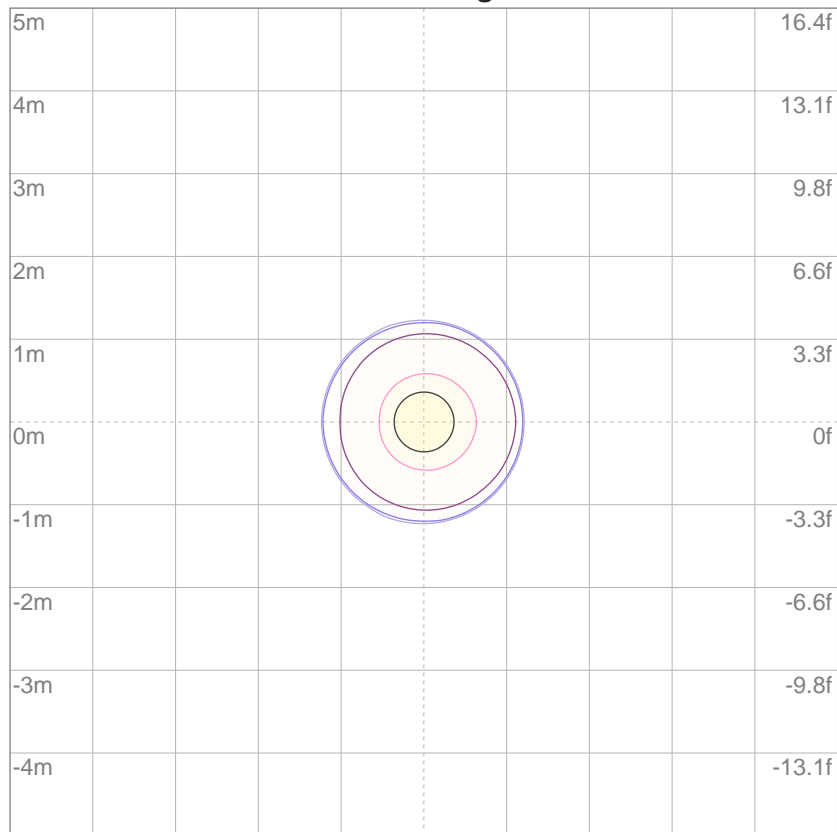
10%	93200 cd
20%	186400 cd
30%	279599 cd
40%	372799 cd
50%	465999 cd
60%	559199 cd
70%	652399 cd
80%	745599 cd
90%	838798 cd

Conditions:

Number of c-planes: 2

Candela at center: 931998 cd

ISO Lux Diagram



3%	280 lx
5%	466 lx
10%	932 lx
30%	2796 lx
50%	4660 lx

Conditions:

Number of c-planes: 2

Lux at center: 9320 lx

*Lux distribution on a surface
when lamp is mounted at 10
meters from the surface.*

Mounting Height: 10 meters (33 feet)